

**WILLIAM BARCROFT
JUNIOR SCHOOL**

**SURVEY OF
PUPILS' VIEWS
(KEY STAGE 2)**

JUNE 2008

CONTENTS

INTRODUCTION

YEAR 3

TABLE OF PERCENTAGE RESPONSE RATES
STACKED COLUMN GRAPH
CLUSTERED COLUMN GRAPH
AVERAGE NUMERICAL RESPONSE BAR CHART

YEAR 4

TABLE OF PERCENTAGE RESPONSE RATES
STACKED COLUMN GRAPH
CLUSTERED COLUMN GRAPH
AVERAGE NUMERICAL RESPONSE BAR CHART

YEAR 5

TABLE OF PERCENTAGE RESPONSE RATES
STACKED COLUMN GRAPH
CLUSTERED COLUMN GRAPH
AVERAGE NUMERICAL RESPONSE BAR CHART

YEAR 6

TABLE OF PERCENTAGE RESPONSE RATES
STACKED COLUMN GRAPH
CLUSTERED COLUMN GRAPH
AVERAGE NUMERICAL RESPONSE BAR CHART

KEY STAGE 2

TABLE OF PERCENTAGE RESPONSE RATES
STACKED COLUMN GRAPH
CLUSTERED COLUMN GRAPH
AVERAGE NUMERICAL RESPONSE BAR CHART 2008
AVERAGE NUMERICAL RESPONSE BAR CHART 2007 and 2008
PUPIL COMMENTS

INTRODUCTION

The views of learners form a critical information flow that is properly a part of performance monitoring. Responding to this information is part of performance management.

The survey questions, designed by ECARDA Ltd, cover the wider scope of enquiry that includes the five outcomes in 'Every Child Matters'. Furthermore, this wider scope of questions feeds into most sections of the OFSTED-designed Self-Evaluation Framework (SEF). The more accurate the self-evaluation, the more robust will be the management plan that specifies the priorities and actions for further improvement.

William Barcroft Junior School commissioned this report by ECARDA Ltd. Its contents are confidential and for use only by the school. All the non-ascribed original materials have been returned to the school.

The report, with its tables and graphs should be self-explanatory. One of the graphs may need some description on its construction and interpretation and this is set out below.

THE AVERAGE NUMERICAL RESPONSE BAR CHART

Responses are assigned numerical values as follows:

Always	=	+15
Often	=	+10
Sometimes	=	+ 5
No response	=	- 0
Never	=	-10

Values for each statement are totalled and divided by the number of response forms to calculate an average response value. This is plotted as a bar chart with a range from - 20(100% "never") to +15 (100% "always").

We recommend that scores below ten should warrant attention whilst scores below five should warrant urgent action.

Sarah Mann
5th July 2008

TECHNICAL NOTES

The response rate for each group is as follows:

Year 3	61
Year 4	64
Year 5	53
Year 6	66

Thus, the total response rate is as follows:

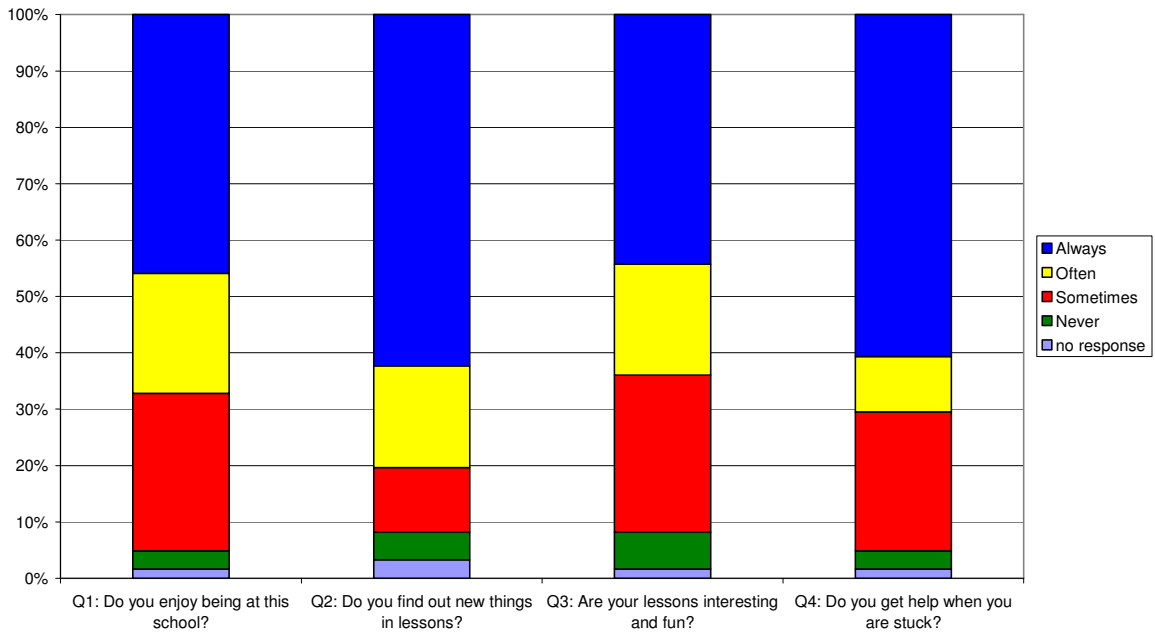
Key Stage 2	244
-------------	-----

A copy of the questionnaire sheet used is included as the next page.

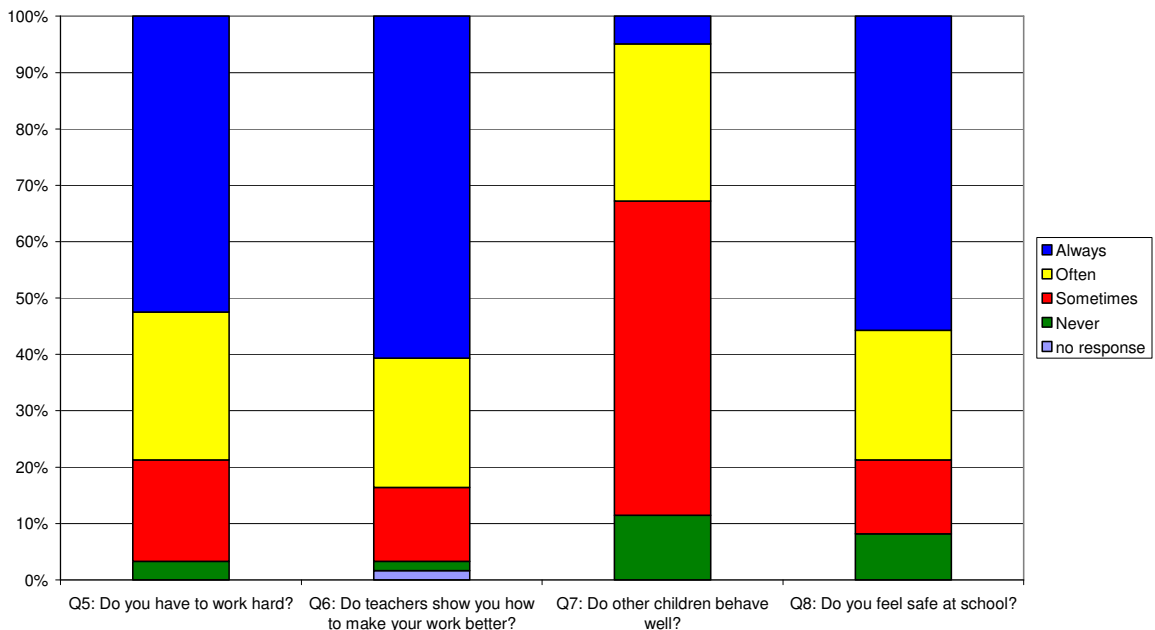
William Barcroft Junior School - Pupil Survey - Year 3 - June 2008

	always	often	sometimes	never	no response
Q1: Do you enjoy being at this school?	45.9%	21.3%	27.9%	3.3%	1.6%
Q2: Do you find out new things in lessons?	62.3%	18.0%	11.5%	4.9%	3.3%
Q3: Are your lessons interesting and fun?	44.3%	19.7%	27.9%	6.6%	1.6%
Q4: Do you get help when you are stuck?	60.7%	9.8%	24.6%	3.3%	1.6%
Q5: Do you have to work hard?	52.5%	26.2%	18.0%	3.3%	0.0%
Q6: Do teachers show you how to make your work better?	60.7%	23.0%	13.1%	1.6%	1.6%
Q7: Do other children behave well?	4.9%	27.9%	55.7%	11.5%	0.0%
Q8: Do you feel safe at school?	55.7%	23.0%	13.1%	8.2%	0.0%
Q9: Is there an adult in school you would go to if you were worried?	54.1%	21.3%	11.5%	11.5%	1.6%
Q10: Are teachers fair to you?	65.6%	18.0%	11.5%	3.3%	1.6%
Q11: Do teachers listen to your ideas?	59.0%	21.3%	14.8%	3.3%	1.6%
Q12: Are you helped to keep fit and healthy?	73.8%	16.4%	9.8%	0.0%	0.0%
Q13: Are you trusted to do things on your own?	39.3%	23.0%	29.5%	6.6%	1.6%
Q14: Do you learn about the area you live in?	26.2%	18.0%	32.8%	23.0%	0.0%

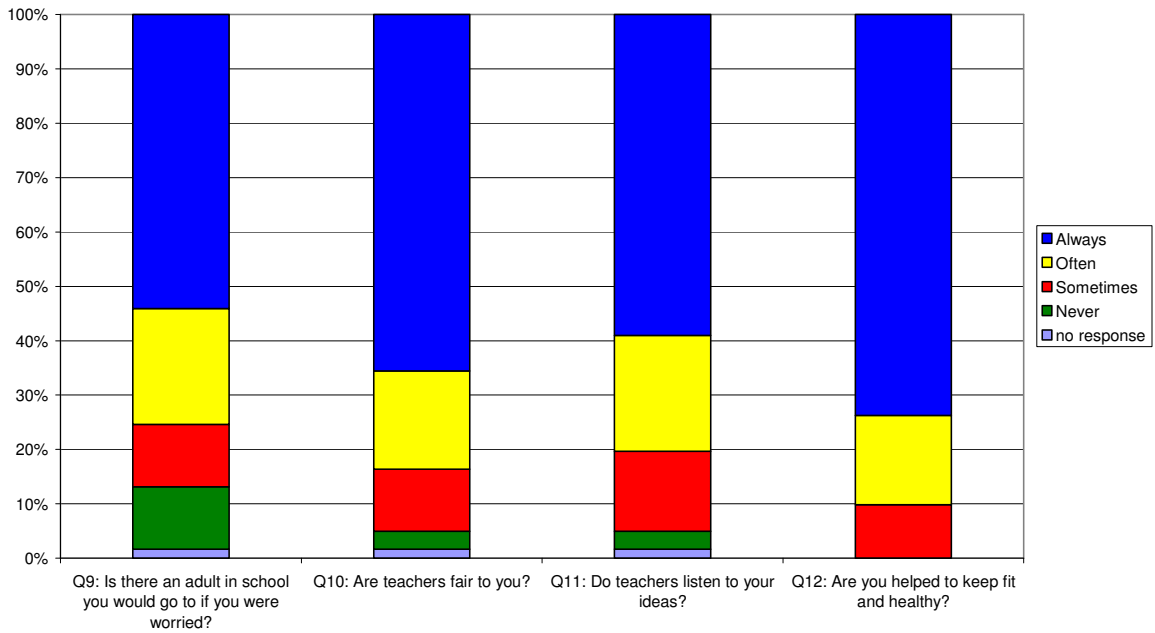
William Barcroft Junior School - Pupil Survey - Year 3 - June 2008



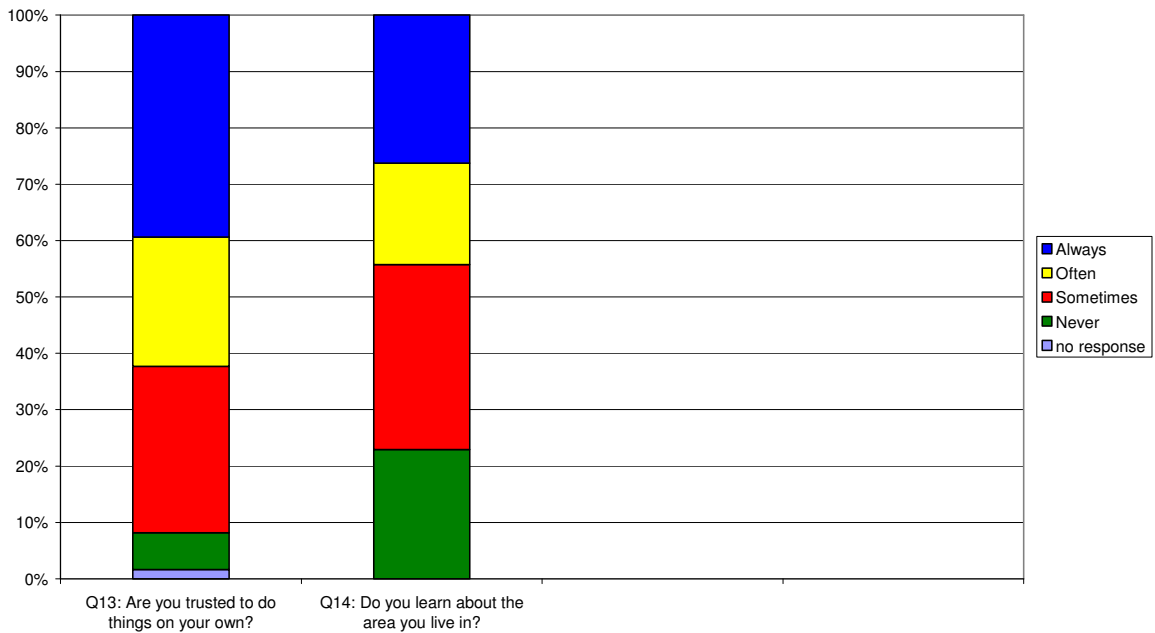
William Barcroft Junior School - Pupil Survey - Year 3 - June 2008

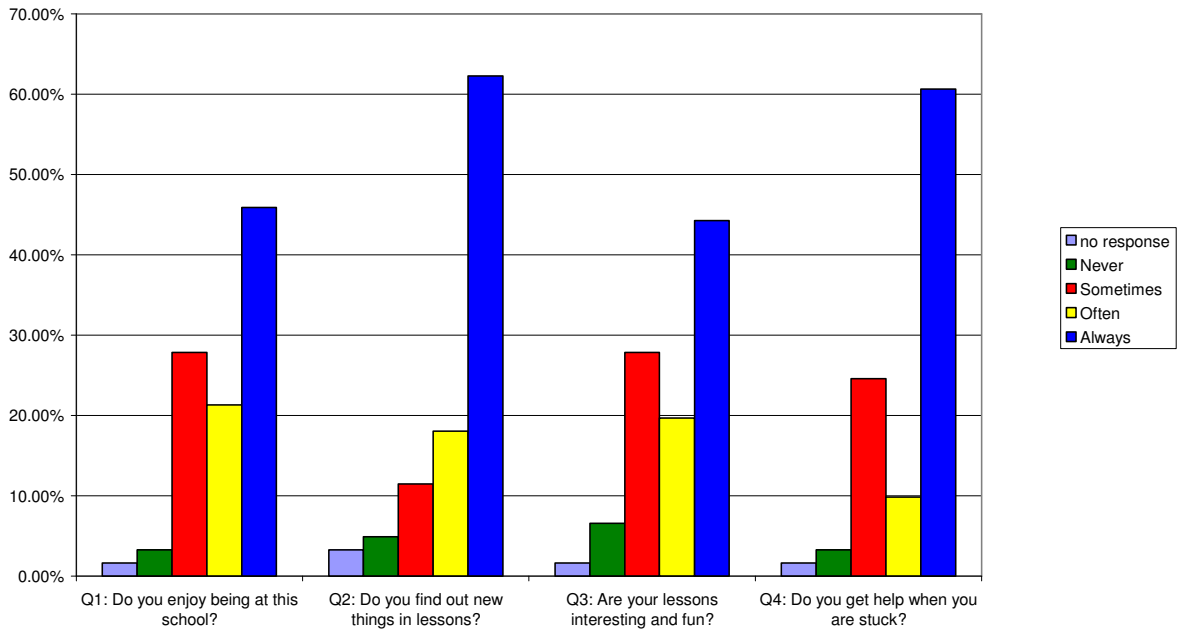


William Barcroft Junior School - Pupil Survey - Year 3 - June 2008

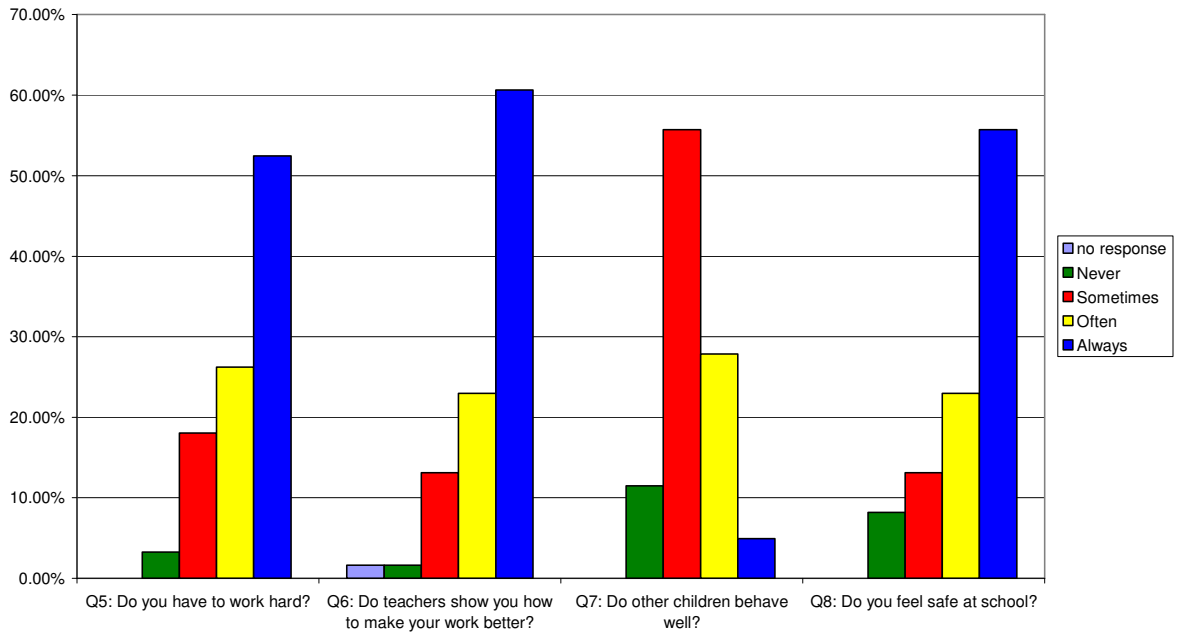


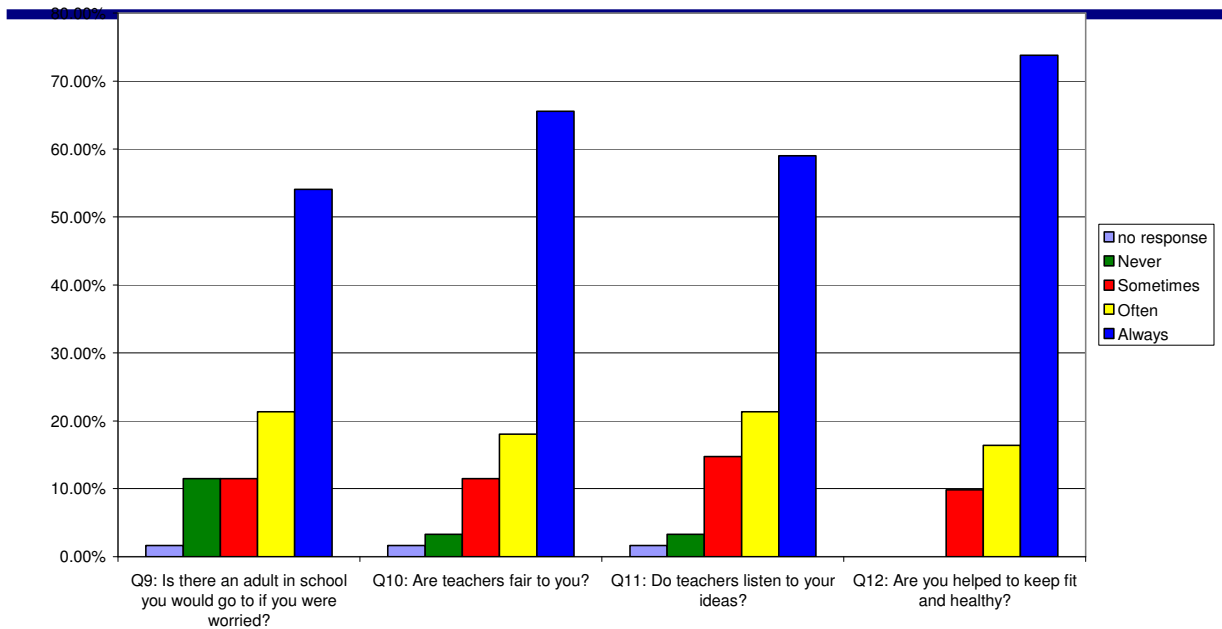
William Barcroft Junior School - Pupil Survey - Year 3 - June 2008



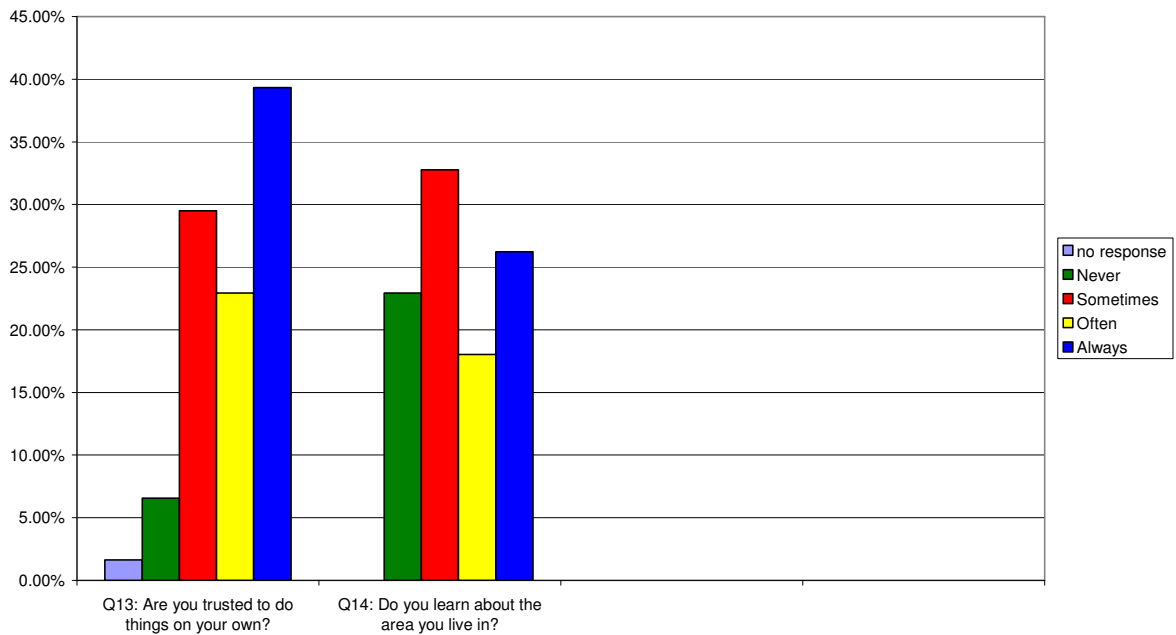


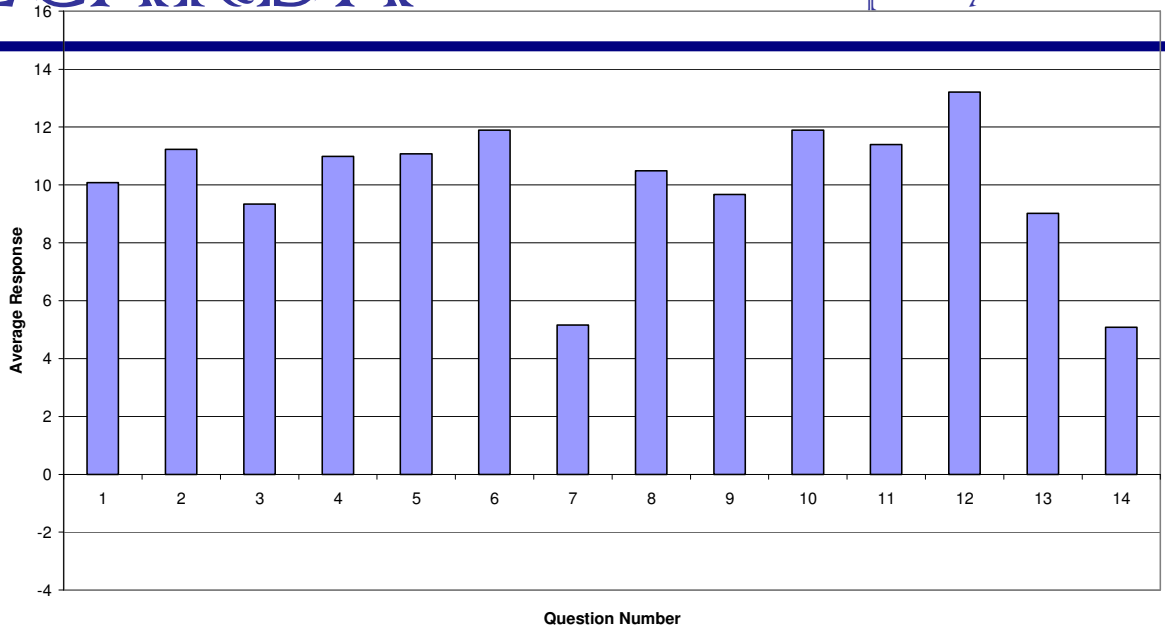
William Barcroft Junior School - Pupil Survey - Year 3 - June 2008



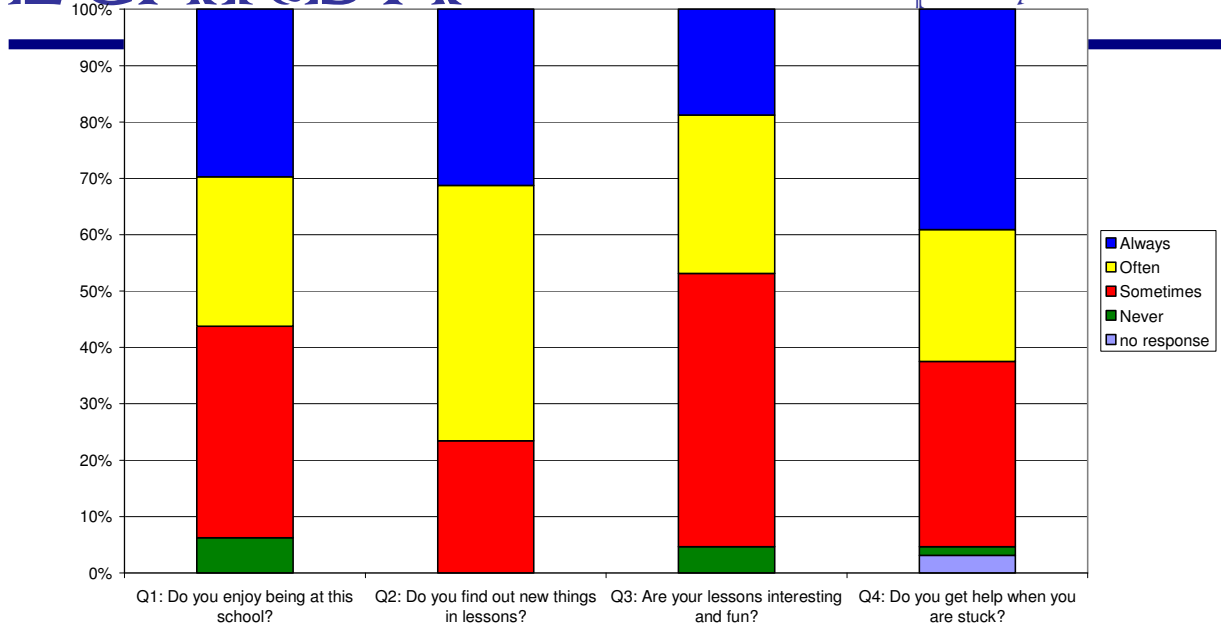


William Barcroft Junior School - Pupil Survey - Year 3 - June 2008

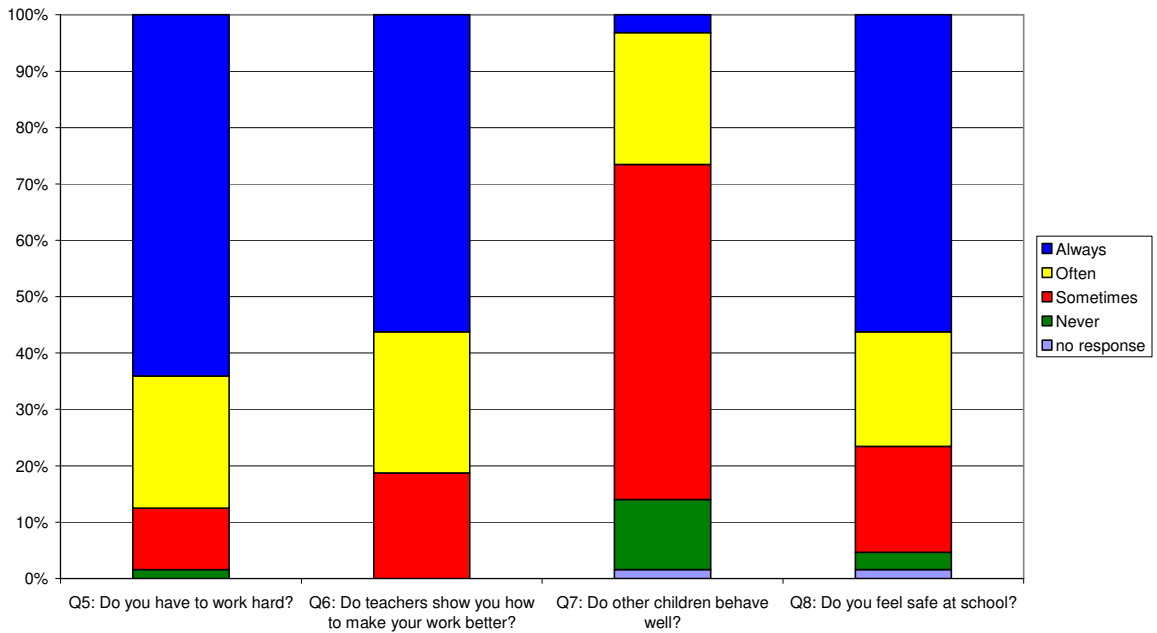


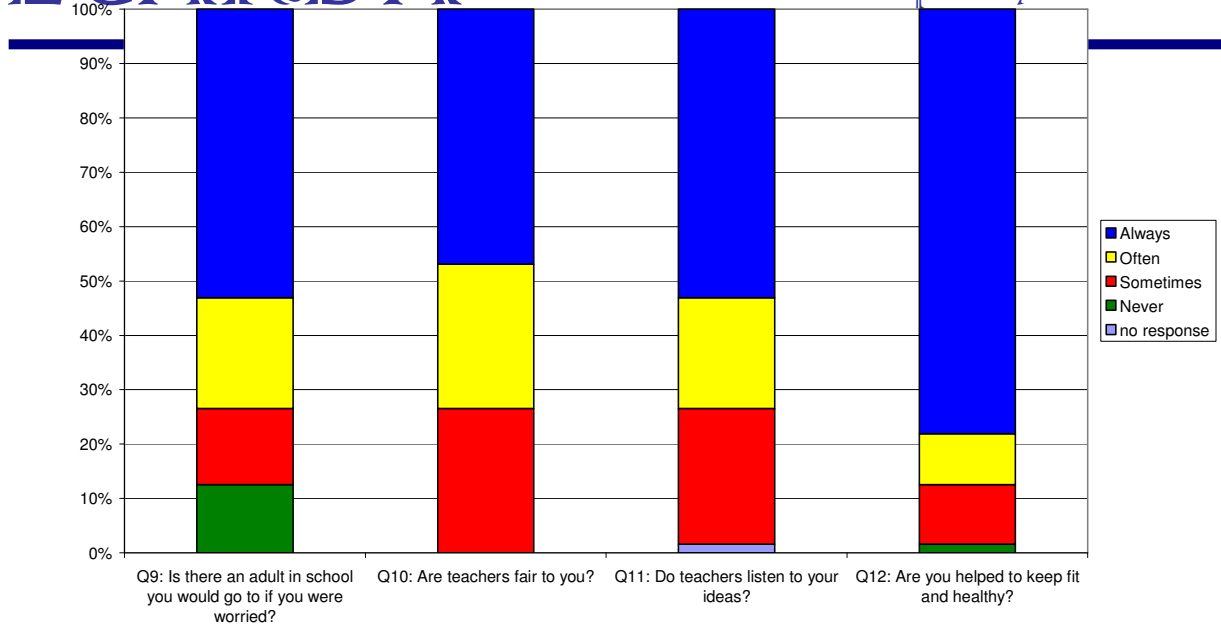


	always	often	sometimes	never	no response
Q1: Do you enjoy being at this school?	29.7%	26.6%	37.5%	6.3%	0.0%
Q2: Do you find out new things in lessons?	31.3%	45.3%	23.4%	0.0%	0.0%
Q3: Are your lessons interesting and fun?	18.8%	28.1%	48.4%	4.7%	0.0%
Q4: Do you get help when you are stuck?	39.1%	23.4%	32.8%	1.6%	3.1%
Q5: Do you have to work hard?	64.1%	23.4%	10.9%	1.6%	0.0%
Q6: Do teachers show you how to make your work better?	56.3%	25.0%	18.8%	0.0%	0.0%
Q7: Do other children behave well?	3.1%	23.4%	59.4%	12.5%	1.6%
Q8: Do you feel safe at school?	56.3%	20.3%	18.8%	3.1%	1.6%
Q9: Is there an adult in school you would go to if you were worried?	53.1%	20.3%	14.1%	12.5%	0.0%
Q10: Are teachers fair to you?	46.9%	26.6%	26.6%	0.0%	0.0%
Q11: Do teachers listen to your ideas?	53.1%	20.3%	25.0%	0.0%	1.6%
Q12: Are you helped to keep fit and healthy?	78.1%	9.4%	10.9%	1.6%	0.0%
Q13: Are you trusted to do things on your own?	29.7%	31.3%	32.8%	6.3%	0.0%
Q14: Do you learn about the area you live in?	9.4%	21.9%	51.6%	17.2%	0.0%

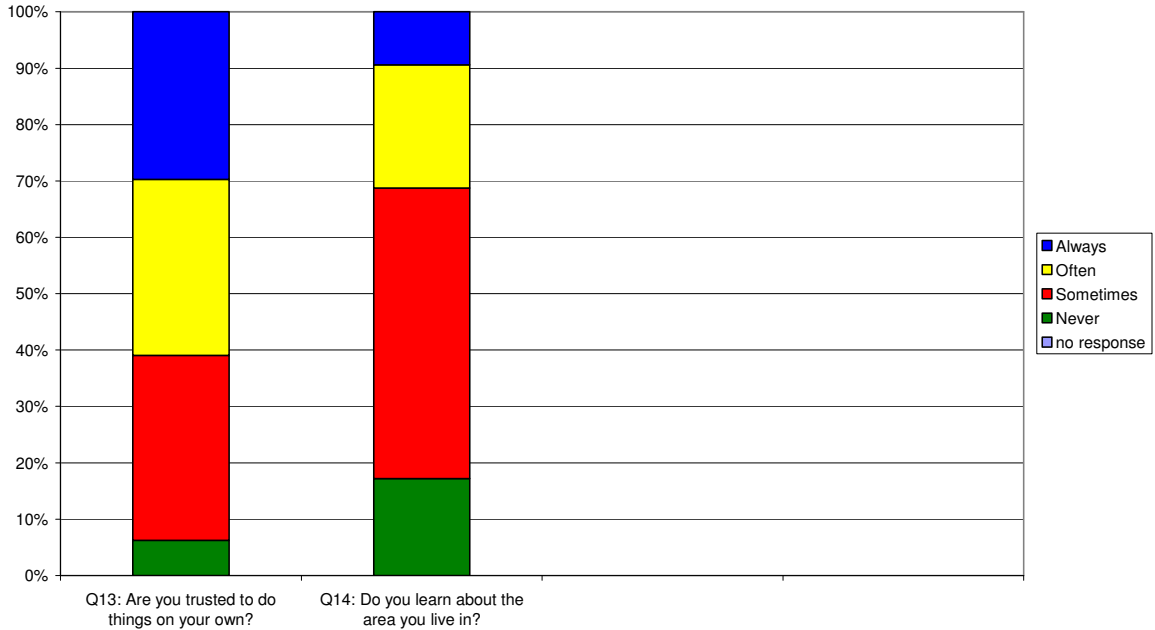


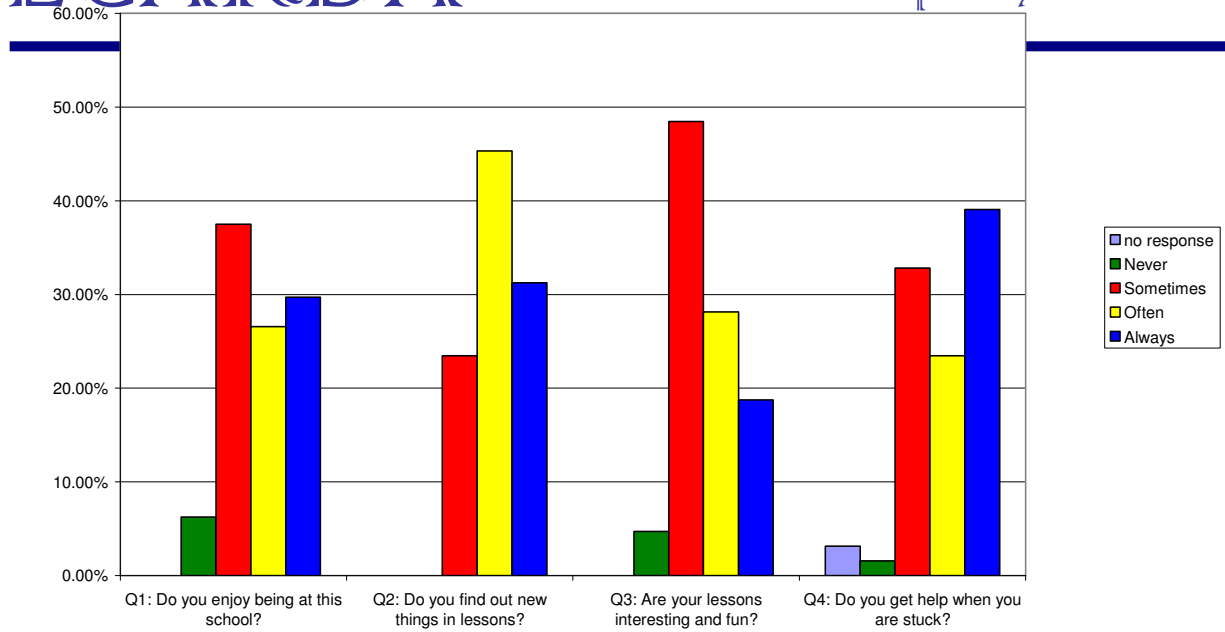
William Barcroft Junior School - Pupil Survey - Year 4 - June 2008



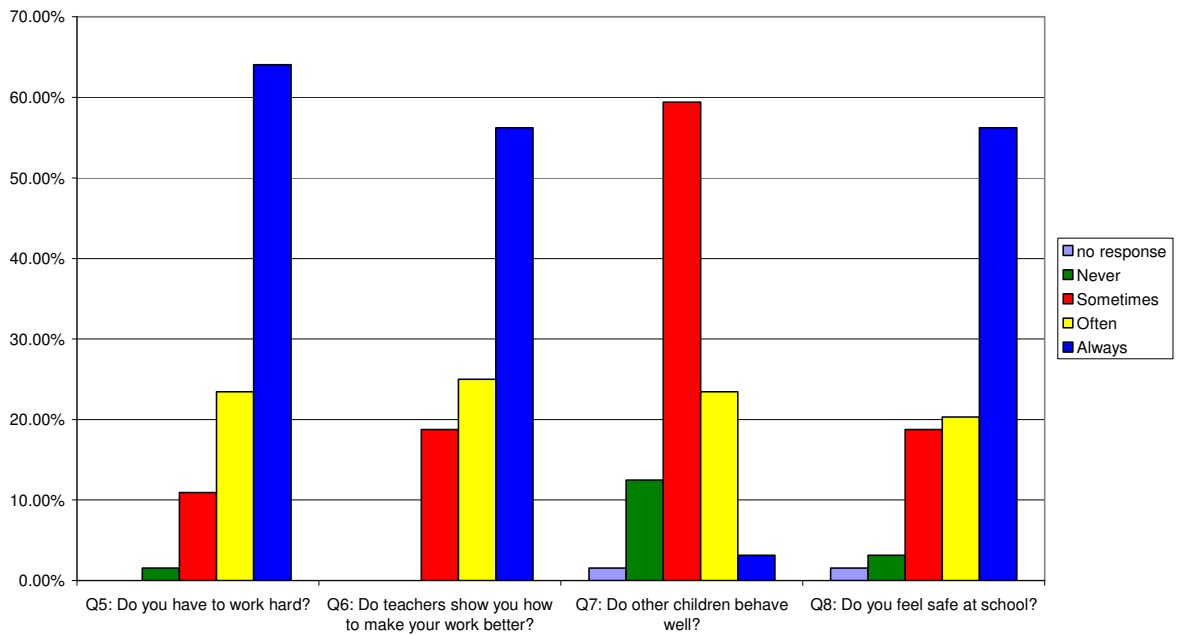


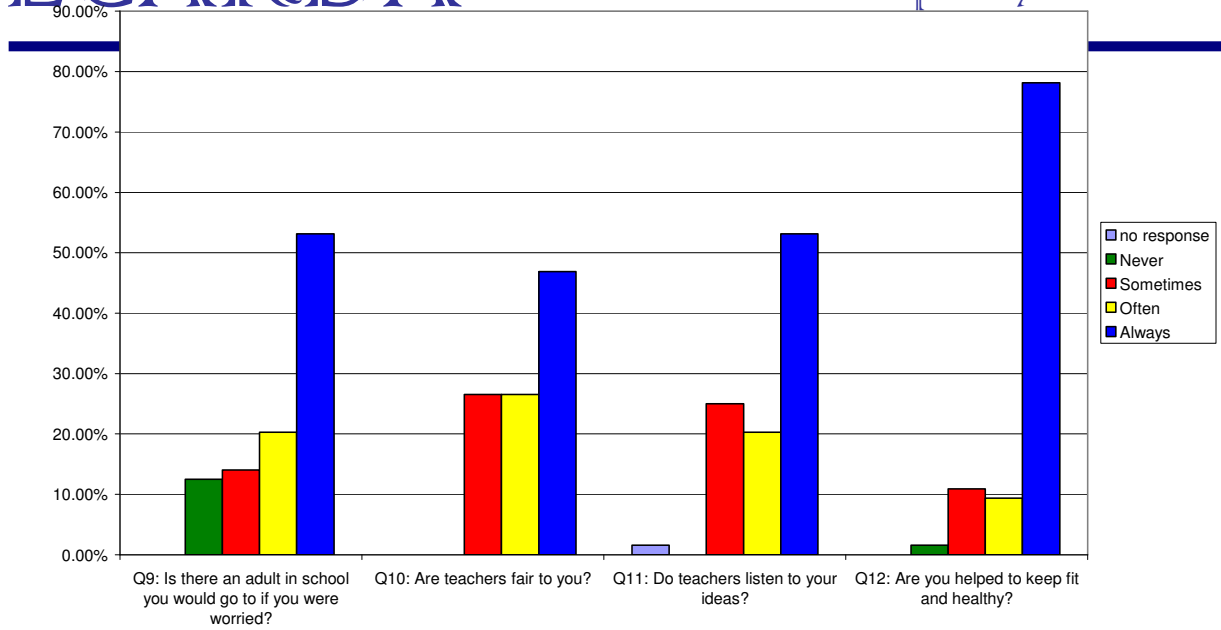
William Barcroft Junior School - Pupil Survey - Year 4 - June 2008



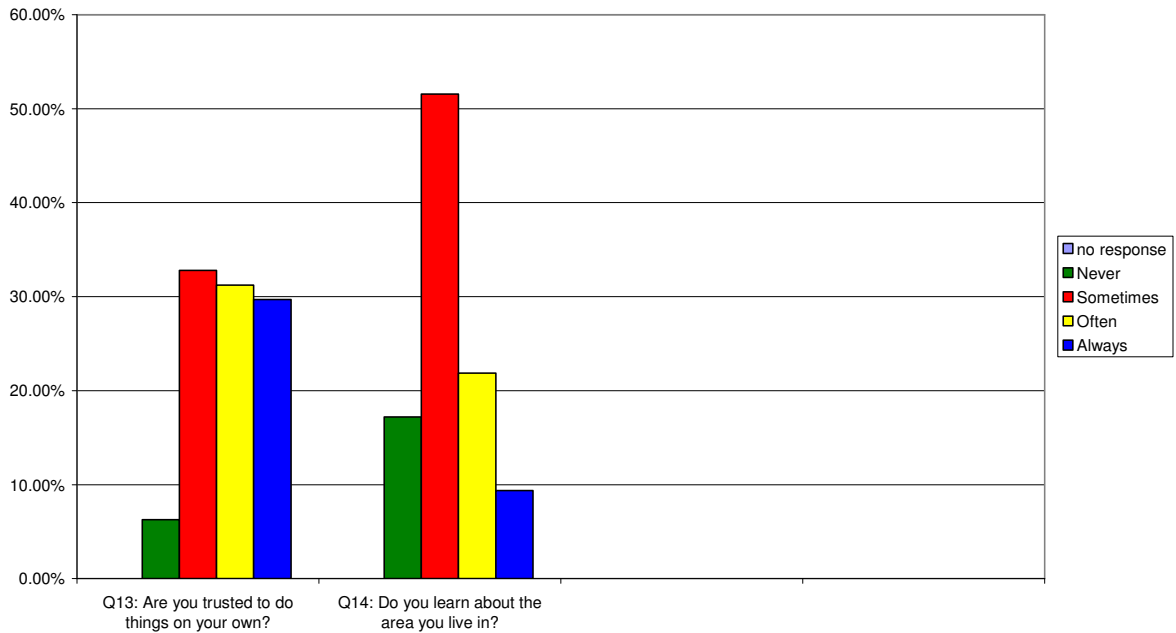


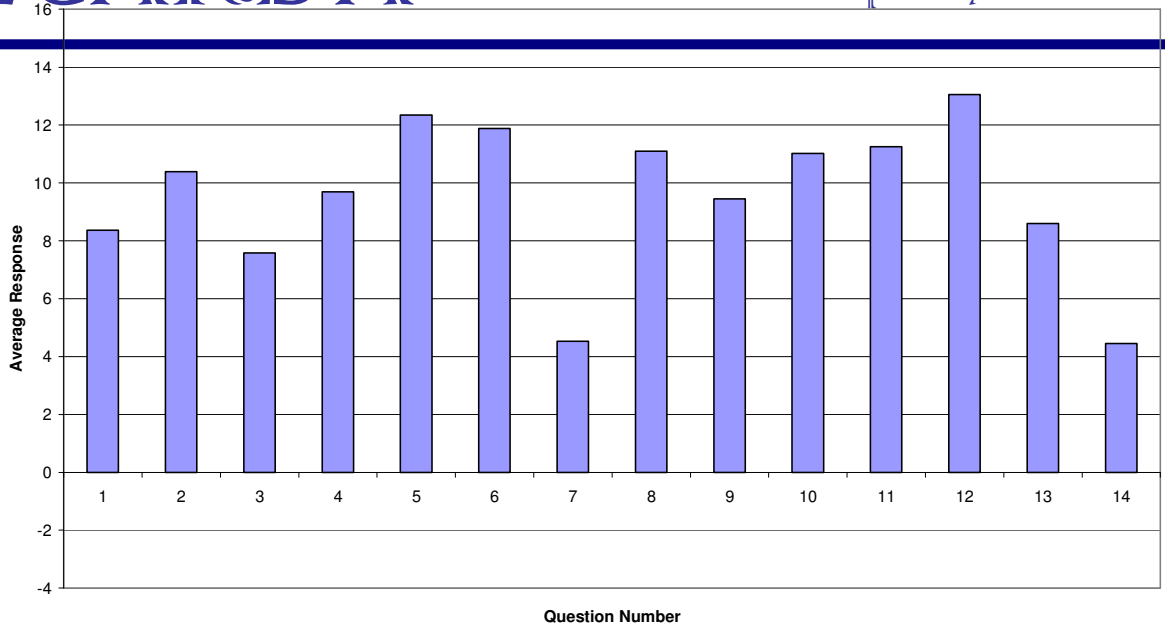
William Barcroft Junior School - Pupil Survey - Year 4 - June 2008



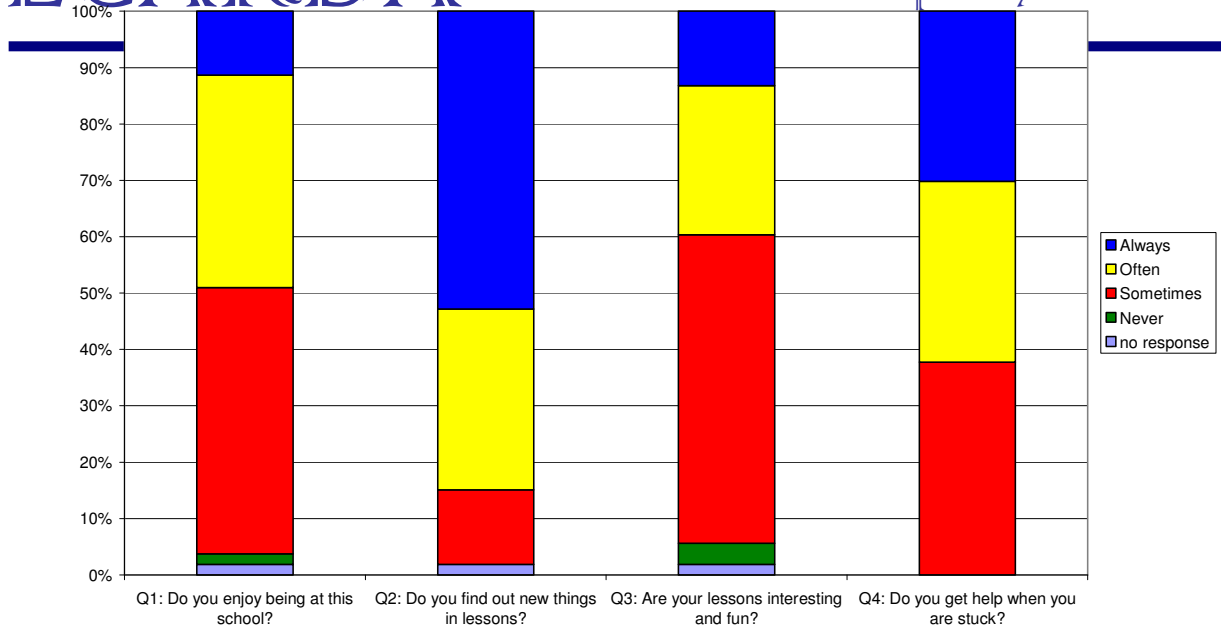


William Barcroft Junior School - Pupil Survey - Year 4 - June 2008

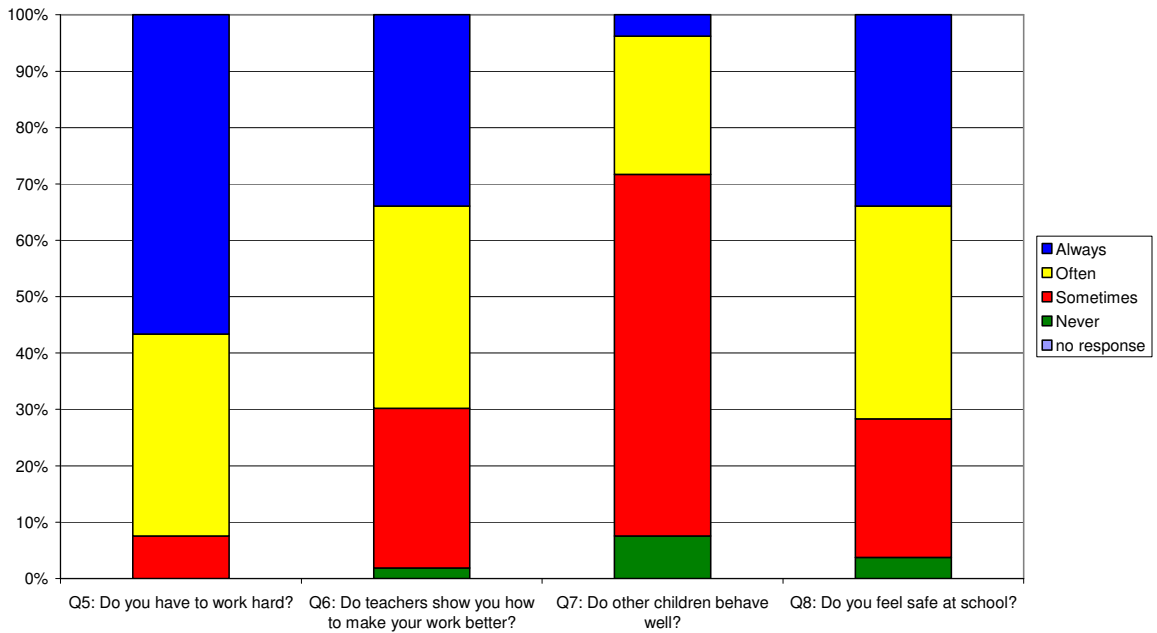


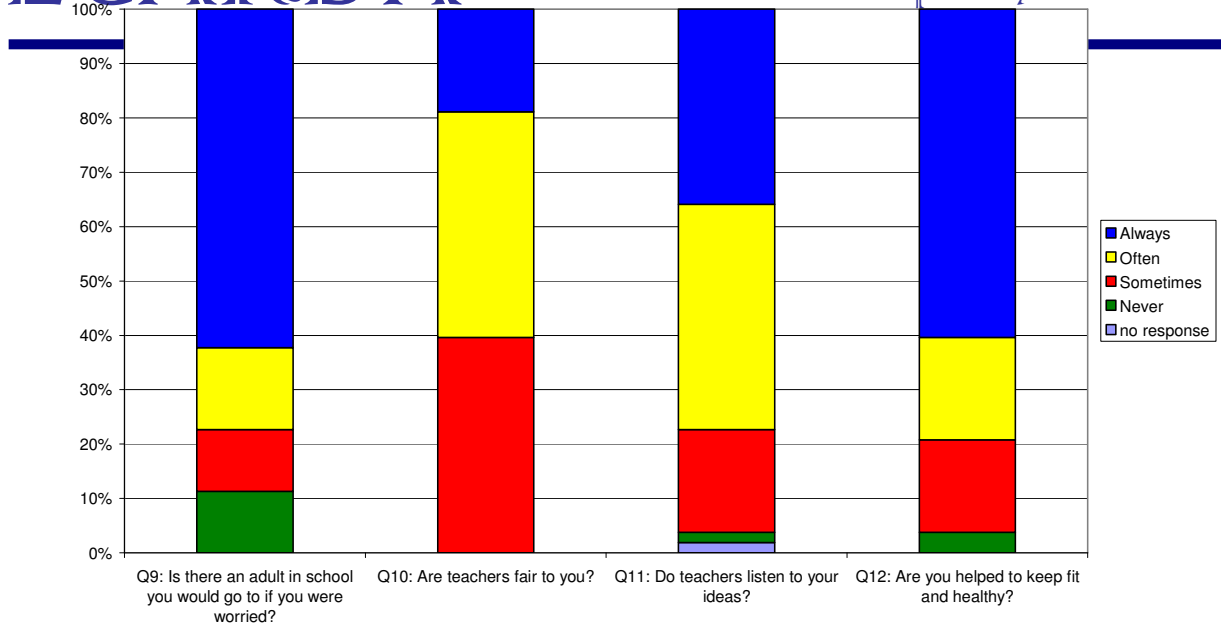


	always	often	sometimes	never	no response
Q1: Do you enjoy being at this school?	11.3%	37.7%	47.2%	1.9%	1.9%
Q2: Do you find out new things in lessons?	52.8%	32.1%	13.2%	0.0%	1.9%
Q3: Are your lessons interesting and fun?	13.2%	26.4%	54.7%	3.8%	1.9%
Q4: Do you get help when you are stuck?	30.2%	32.1%	37.7%	0.0%	0.0%
Q5: Do you have to work hard?	56.6%	35.8%	7.5%	0.0%	0.0%
Q6: Do teachers show you how to make your work better?	34.0%	35.8%	28.3%	1.9%	0.0%
Q7: Do other children behave well?	3.8%	24.5%	64.2%	7.5%	0.0%
Q8: Do you feel safe at school?	34.0%	37.7%	24.5%	3.8%	0.0%
Q9: Is there an adult in school you would go to if you were worried?	62.3%	15.1%	11.3%	11.3%	0.0%
Q10: Are teachers fair to you?	18.9%	41.5%	39.6%	0.0%	0.0%
Q11: Do teachers listen to your ideas?	35.8%	41.5%	18.9%	1.9%	1.9%
Q12: Are you helped to keep fit and healthy?	60.4%	18.9%	17.0%	3.8%	0.0%
Q13: Are you trusted to do things on your own?	32.1%	30.2%	32.1%	5.7%	0.0%
Q14: Do you learn about the area you live in?	9.4%	13.2%	66.0%	11.3%	0.0%

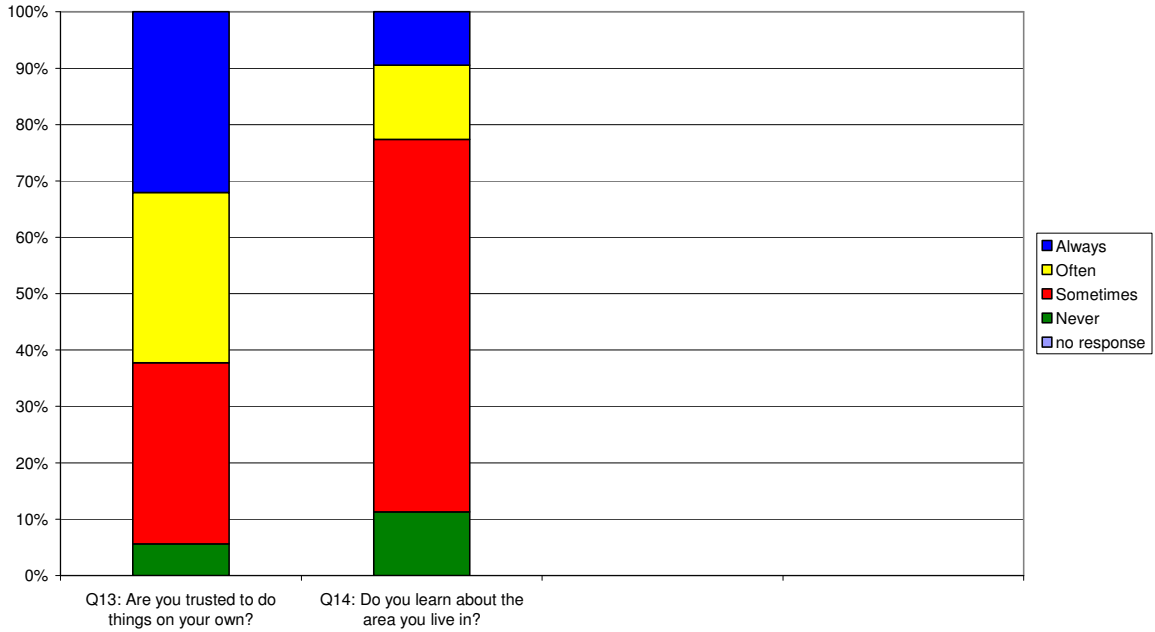


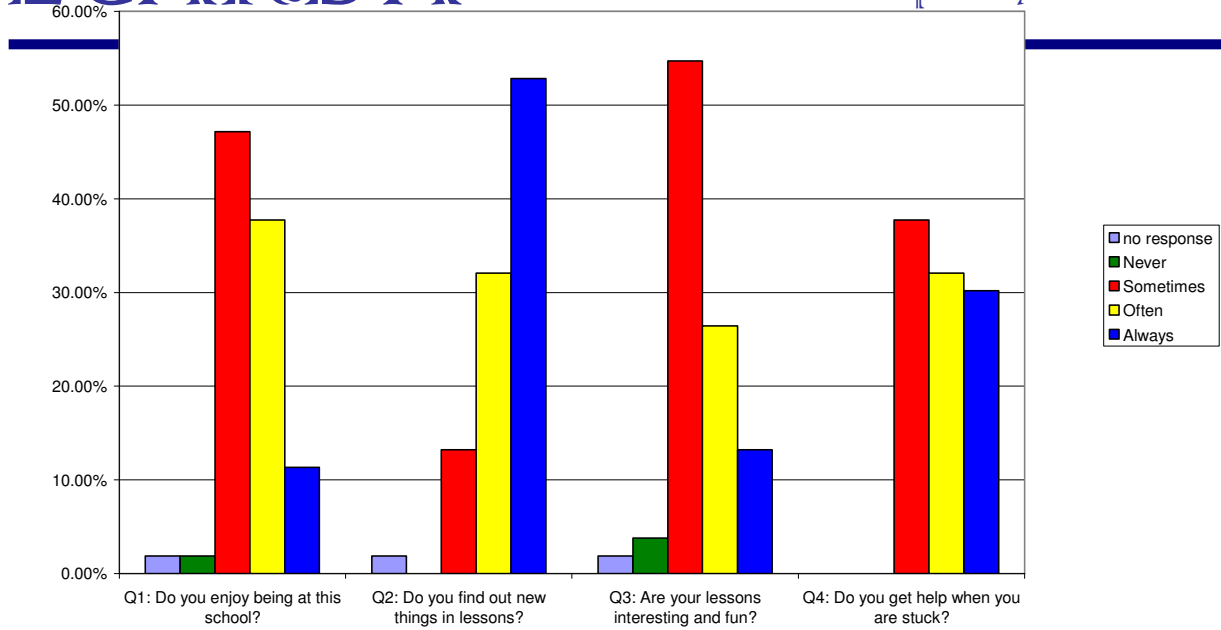
William Barcroft Junior School - Pupil Survey - Year 5 - June 2008



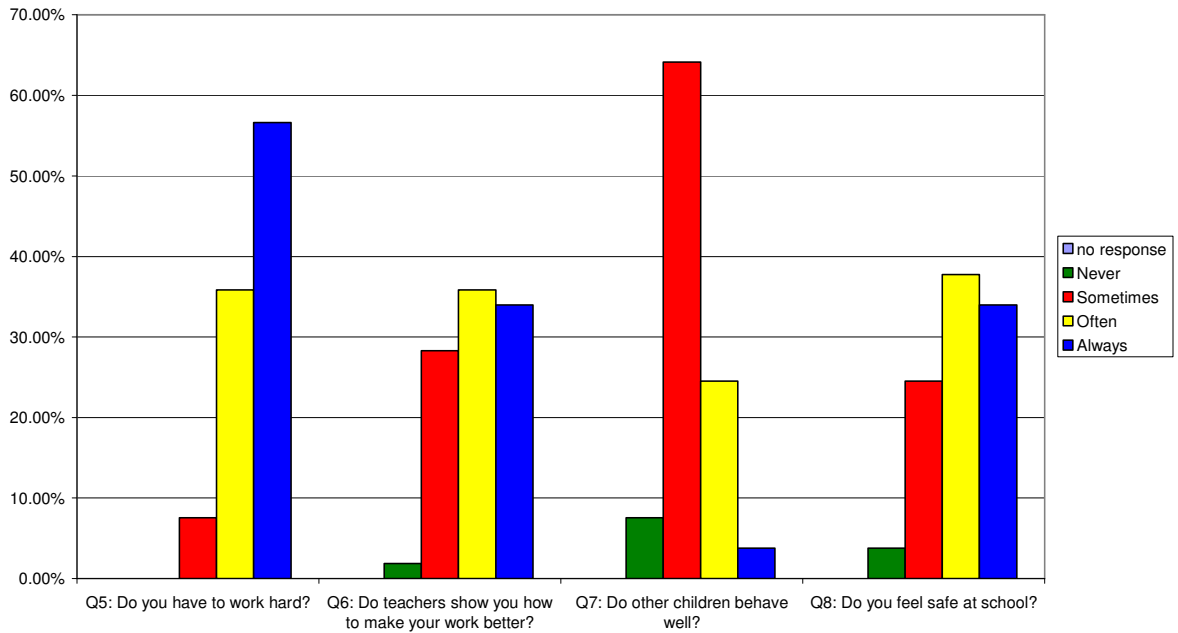


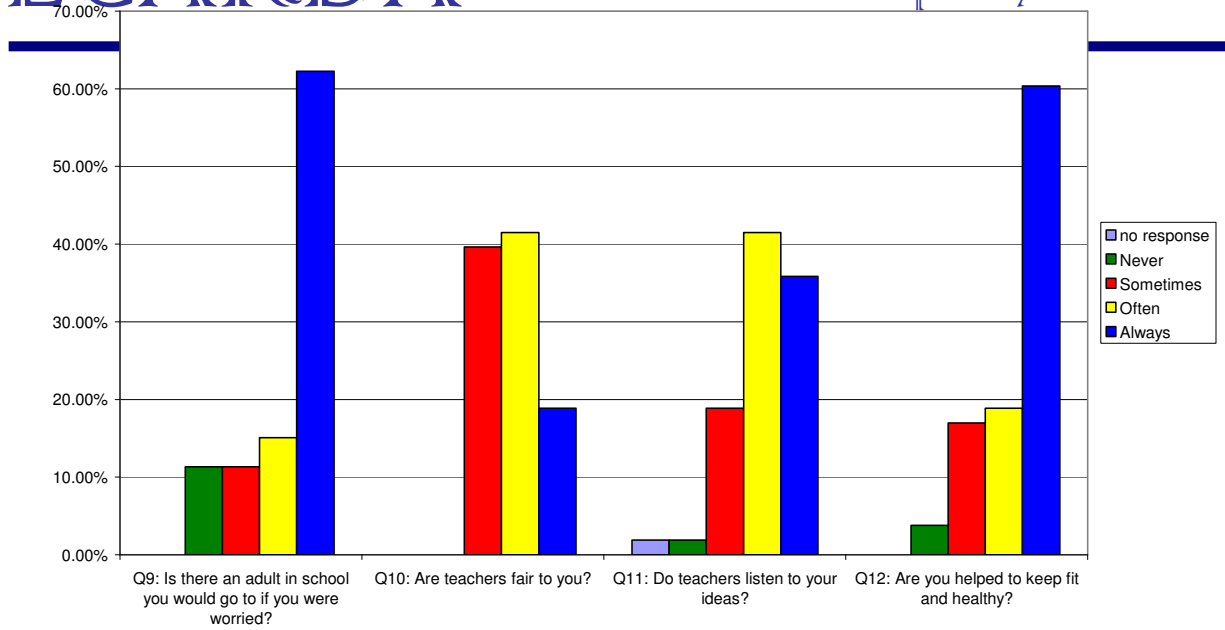
William Barcroft Junior School - Pupil Survey - Year 5 - June 2008



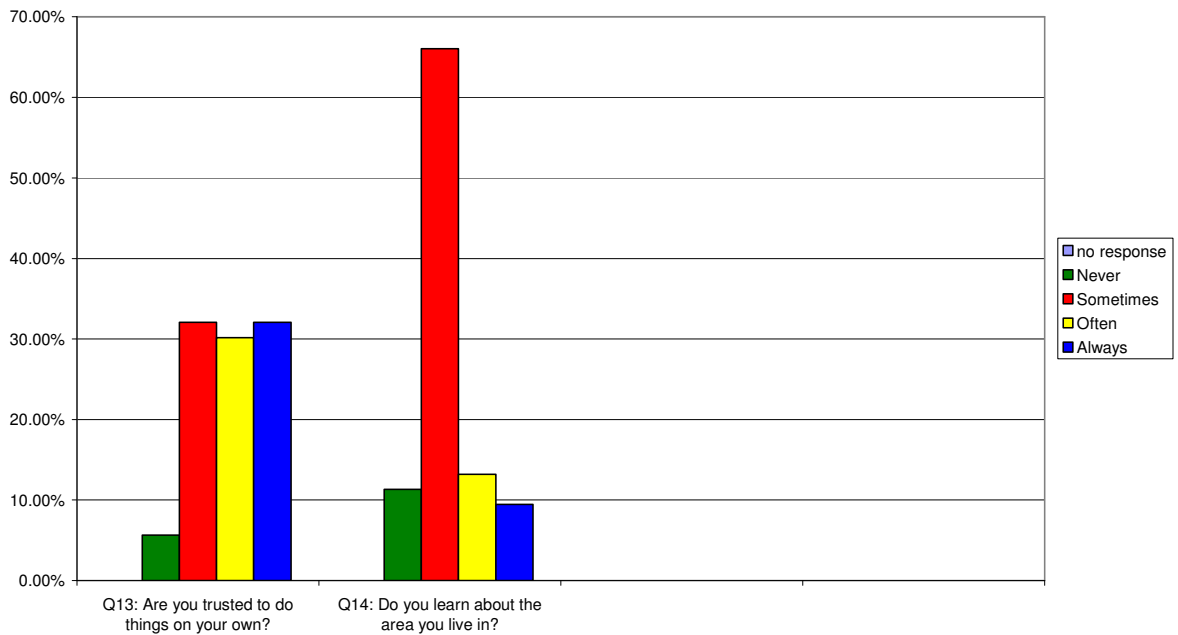


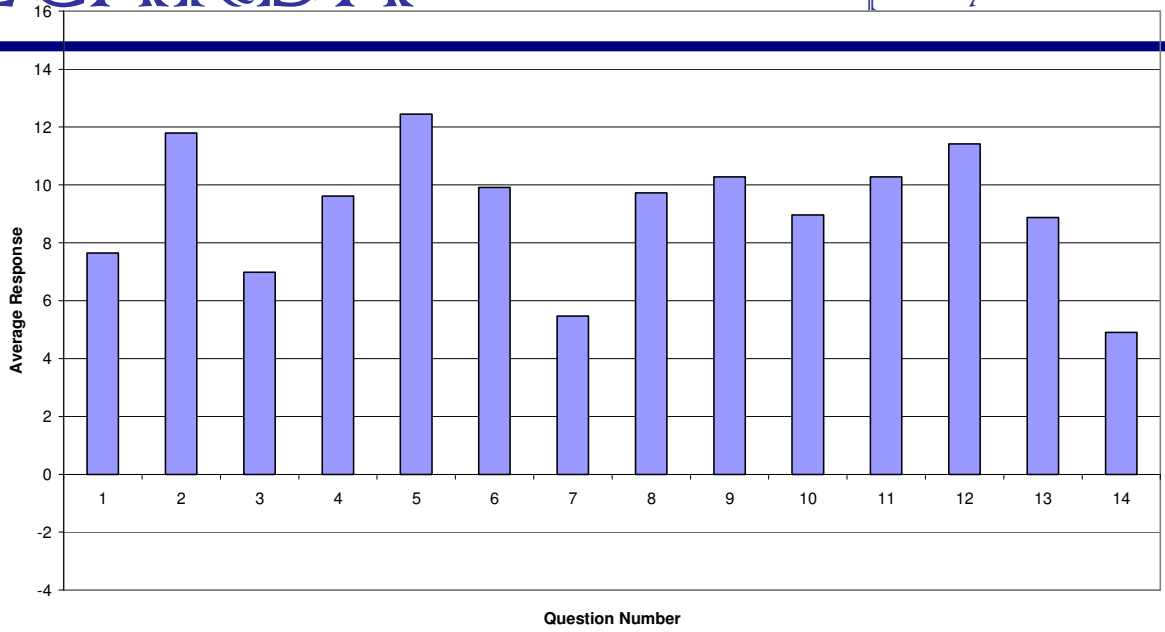
William Barcroft Junior School - Pupil Survey - Year 5 - June 2008



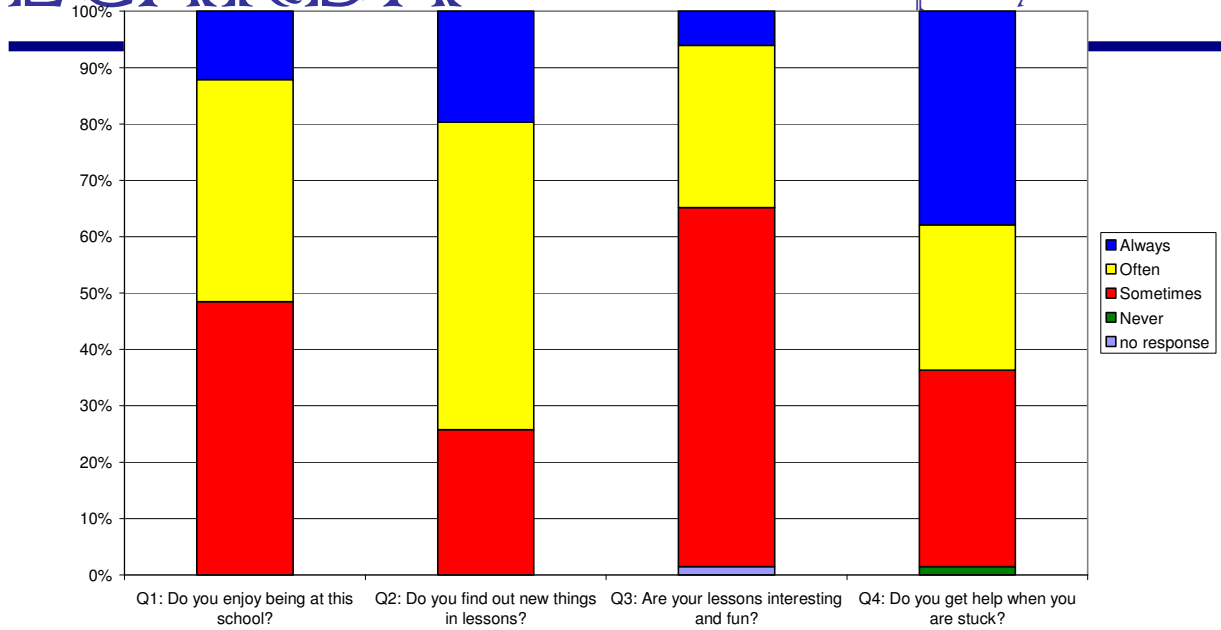


William Barcroft Junior School - Pupil Survey - Year 5 - June 2008

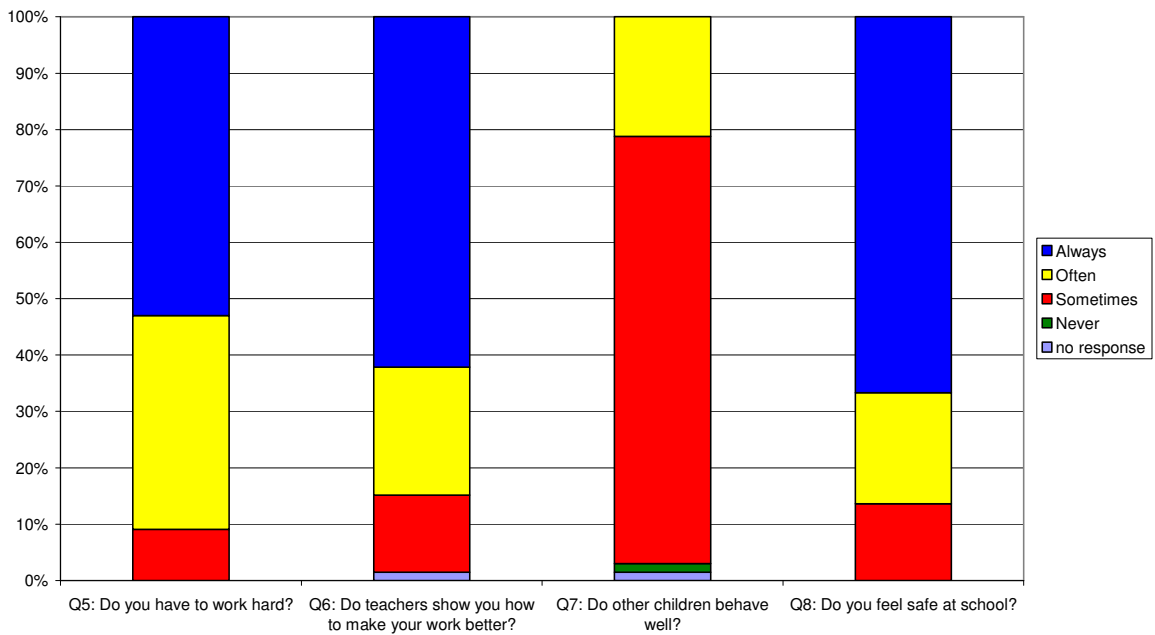


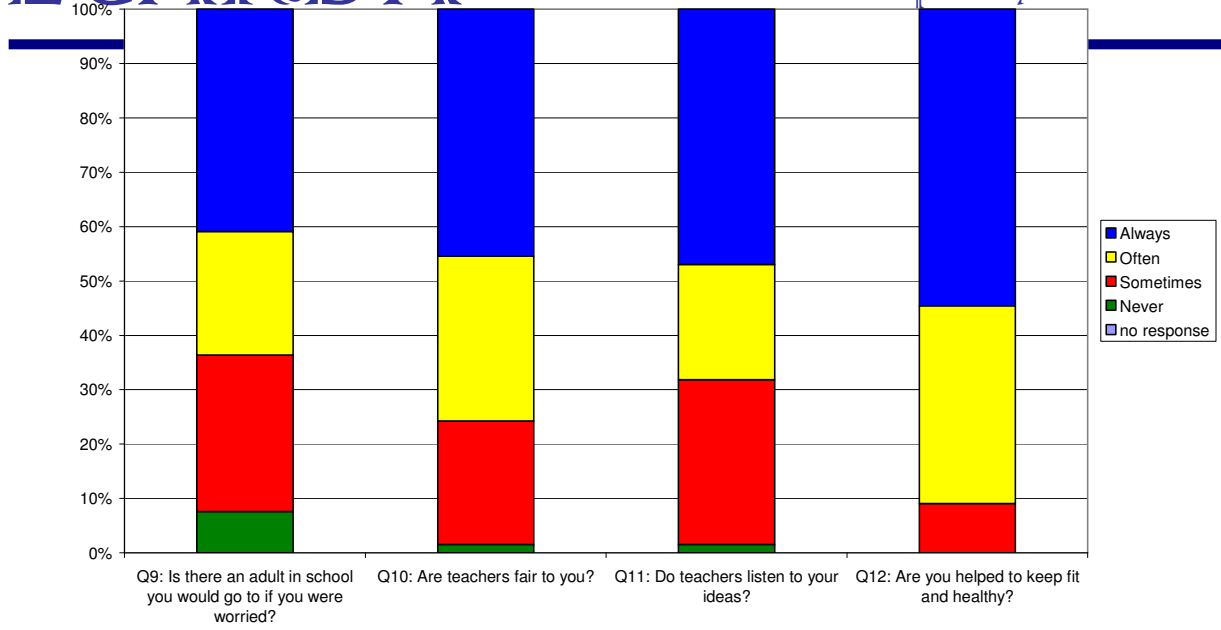


	always	often	sometimes	never	no response
Q1: Do you enjoy being at this school?	12.1%	39.4%	48.5%	0.0%	0.0%
Q2: Do you find out new things in lessons?	19.7%	54.5%	25.8%	0.0%	0.0%
Q3: Are your lessons interesting and fun?	6.1%	28.8%	63.6%	0.0%	1.5%
Q4: Do you get help when you are stuck?	37.9%	25.8%	34.8%	1.5%	0.0%
Q5: Do you have to work hard?	53.0%	37.9%	9.1%	0.0%	0.0%
Q6: Do teachers show you how to make your work better?	62.1%	22.7%	13.6%	0.0%	1.5%
Q7: Do other children behave well?	0.0%	21.2%	75.8%	1.5%	1.5%
Q8: Do you feel safe at school?	66.7%	19.7%	13.6%	0.0%	0.0%
Q9: Is there an adult in school you would go to if you were worried?	40.9%	22.7%	28.8%	7.6%	0.0%
Q10: Are teachers fair to you?	45.5%	30.3%	22.7%	1.5%	0.0%
Q11: Do teachers listen to your ideas?	47.0%	21.2%	30.3%	1.5%	0.0%
Q12: Are you helped to keep fit and healthy?	54.5%	36.4%	9.1%	0.0%	0.0%
Q13: Are you trusted to do things on your own?	27.3%	42.4%	28.8%	1.5%	0.0%
Q14: Do you learn about the area you live in?	4.5%	33.3%	59.1%	3.0%	0.0%

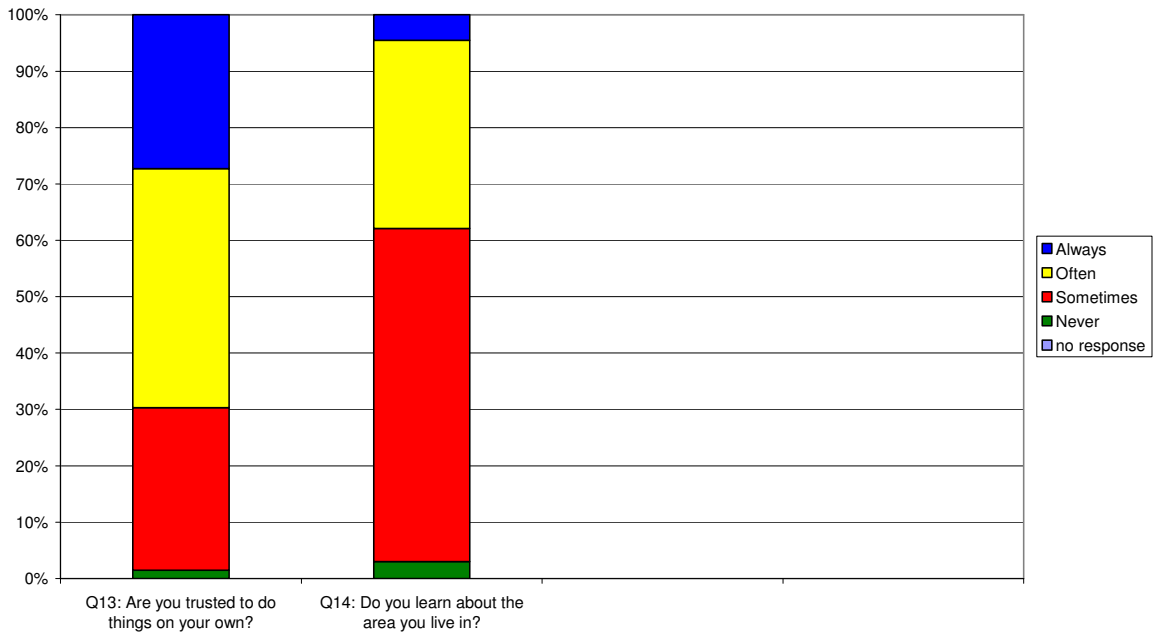


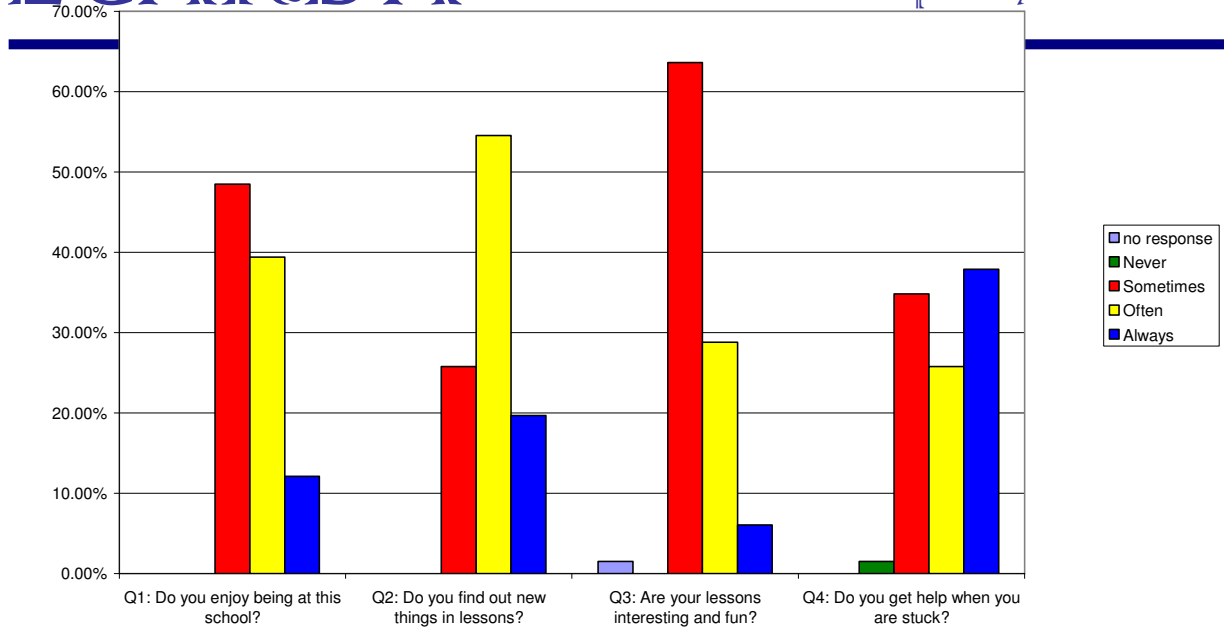
William Barcroft Junior School - Pupil Survey - Year 6 - June 2008



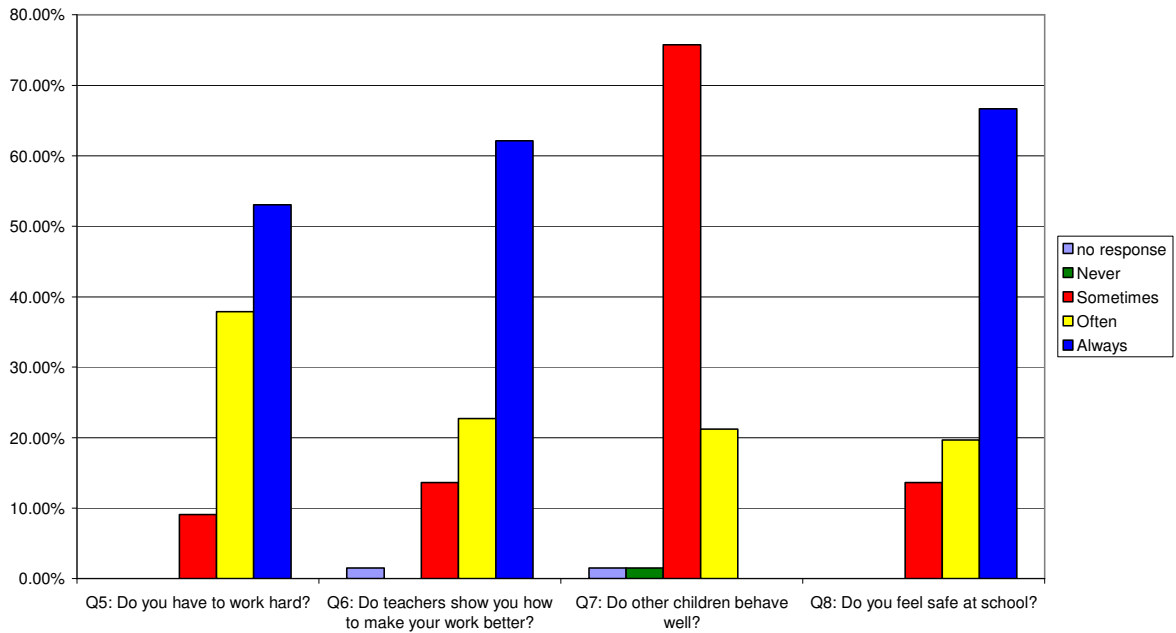


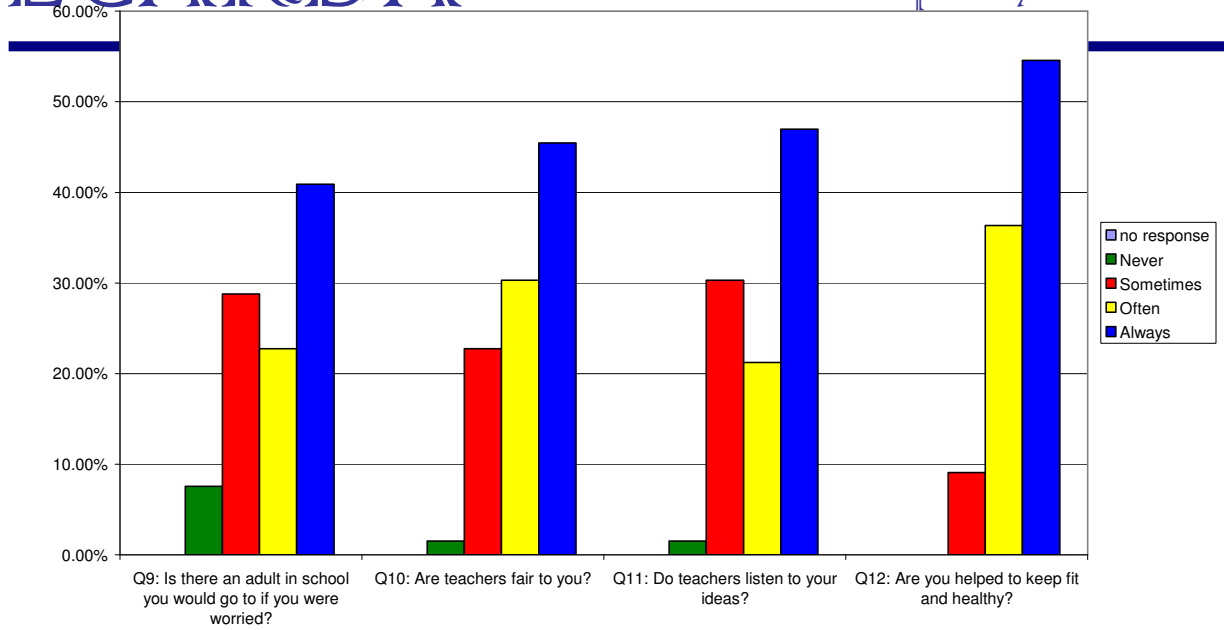
William Barcroft Junior School - Pupil Survey - Year 6 - June 2008



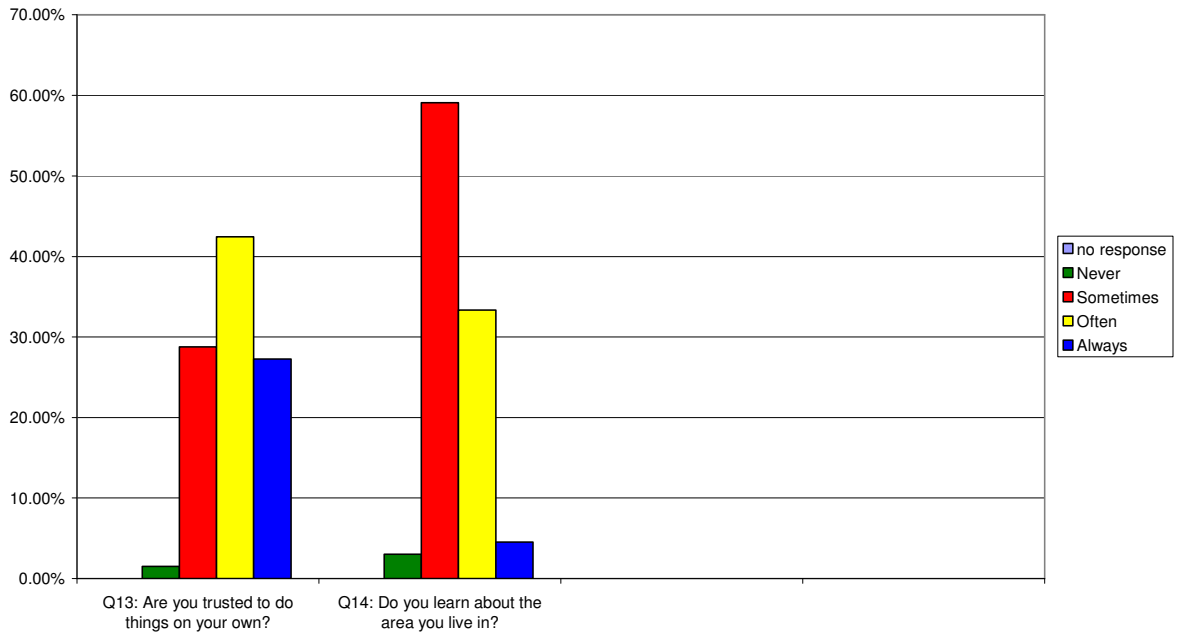


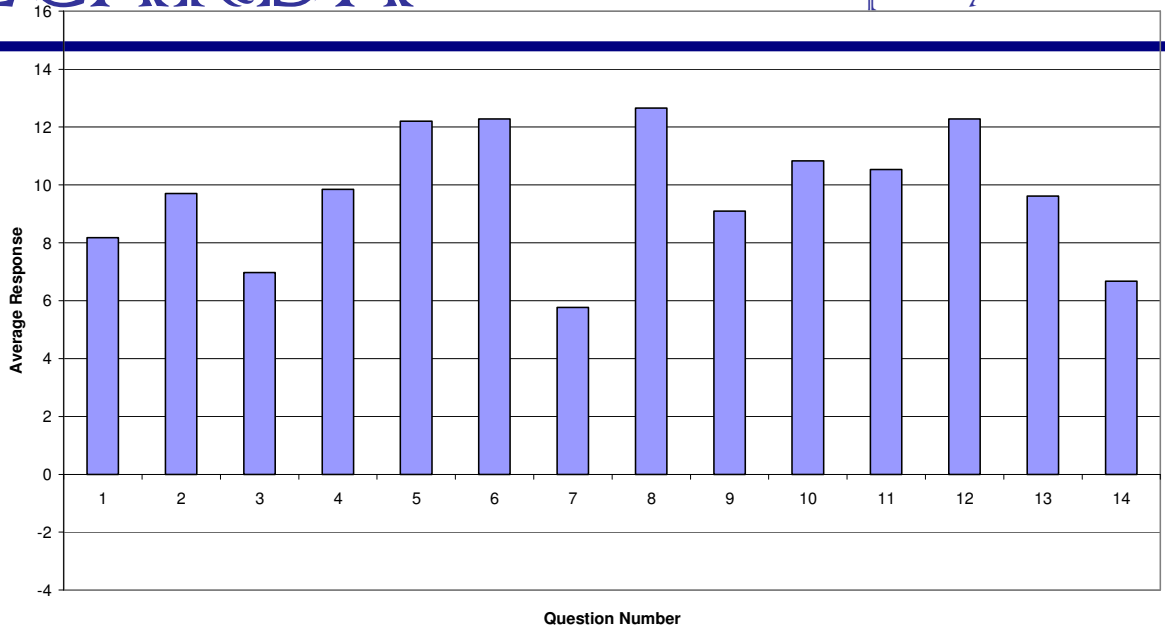
William Barcroft Junior School - Pupil Survey - Year 6 - June 2008



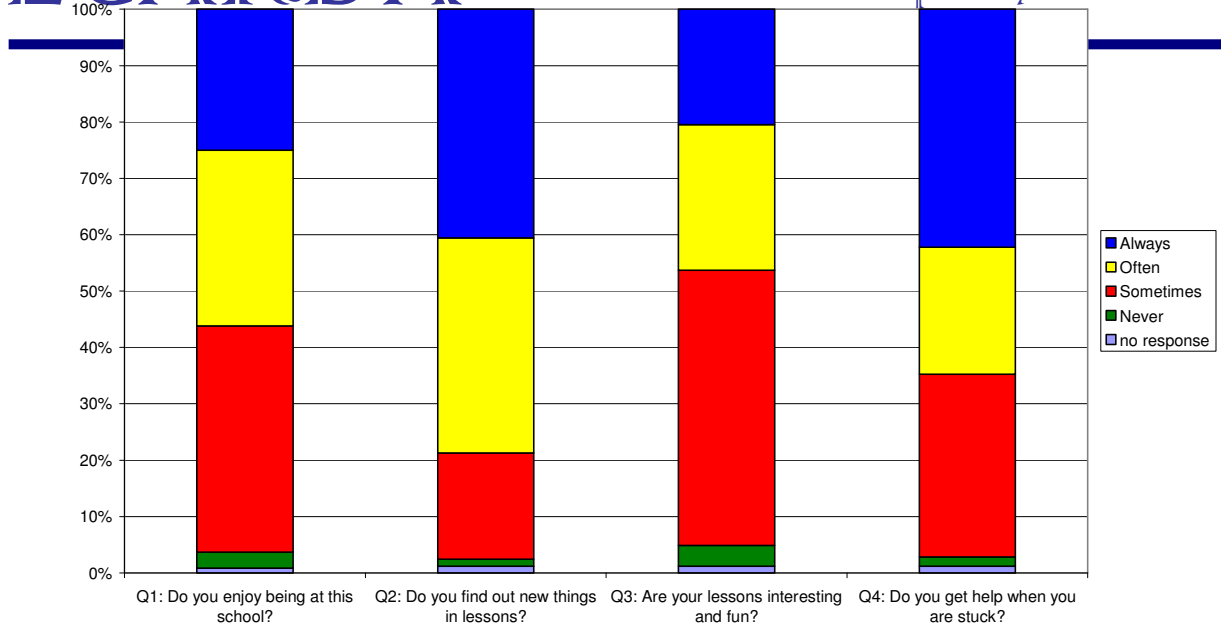


William Barcroft Junior School - Pupil Survey - Year 6 - June 2008

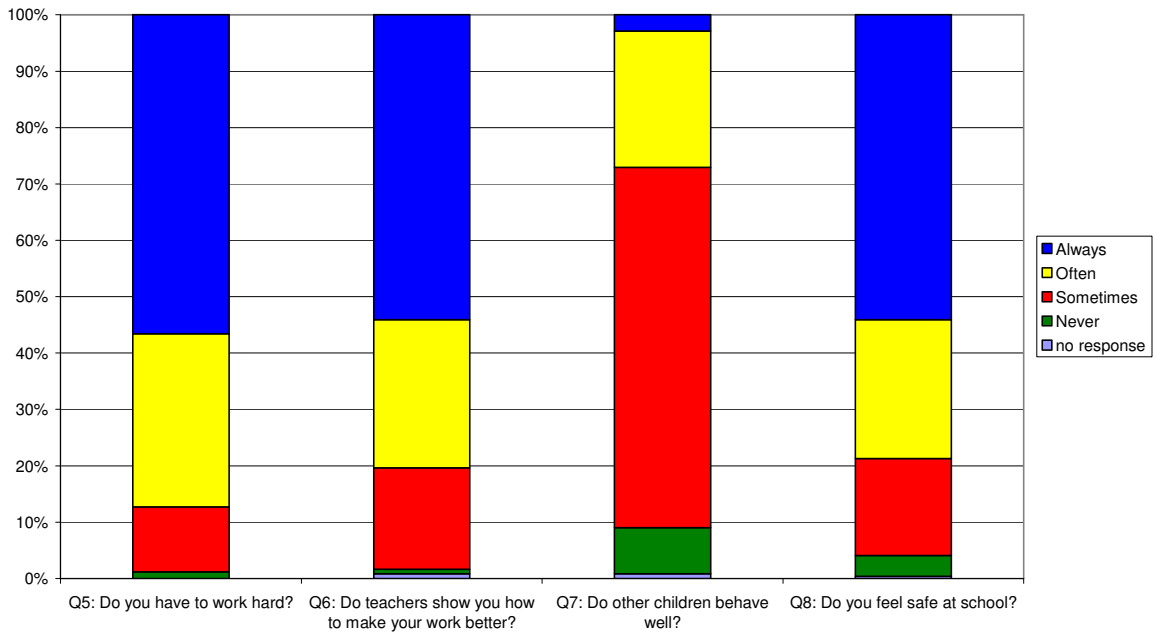


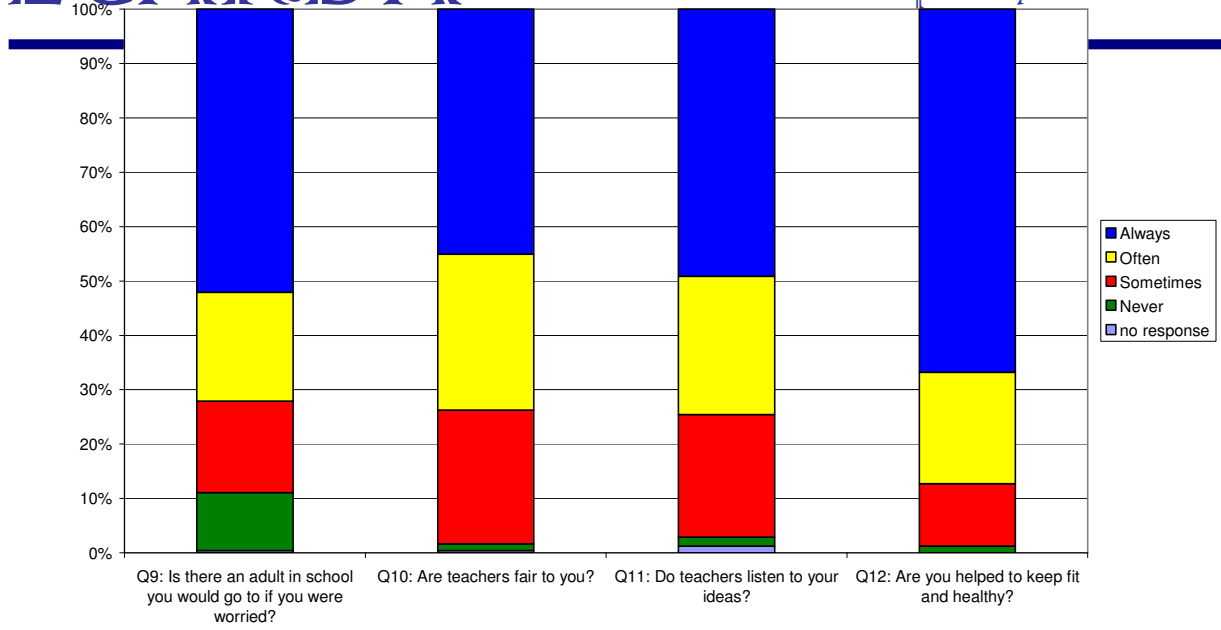


	always	often	sometimes	never	no response
Q1: Do you enjoy being at this school?	25.0%	31.1%	40.2%	2.9%	0.8%
Q2: Do you find out new things in lessons?	40.6%	38.1%	18.9%	1.2%	1.2%
Q3: Are your lessons interesting and fun?	20.5%	25.8%	48.8%	3.7%	1.2%
Q4: Do you get help when you are stuck?	42.2%	22.5%	32.4%	1.6%	1.2%
Q5: Do you have to work hard?	56.6%	30.7%	11.5%	1.2%	0.0%
Q6: Do teachers show you how to make your work better?	54.1%	26.2%	18.0%	0.8%	0.8%
Q7: Do other children behave well?	2.9%	24.2%	63.9%	8.2%	0.8%
Q8: Do you feel safe at school?	54.1%	24.6%	17.2%	3.7%	0.4%
Q9: Is there an adult in school you would go to if you were worried?	52.0%	20.1%	16.8%	10.7%	0.4%
Q10: Are teachers fair to you?	45.1%	28.7%	24.6%	1.2%	0.4%
Q11: Do teachers listen to your ideas?	49.2%	25.4%	22.5%	1.6%	1.2%
Q12: Are you helped to keep fit and healthy?	66.8%	20.5%	11.5%	1.2%	0.0%
Q13: Are you trusted to do things on your own?	32.0%	32.0%	30.7%	4.9%	0.4%
Q14: Do you learn about the area you live in?	12.3%	22.1%	52.0%	13.5%	0.0%

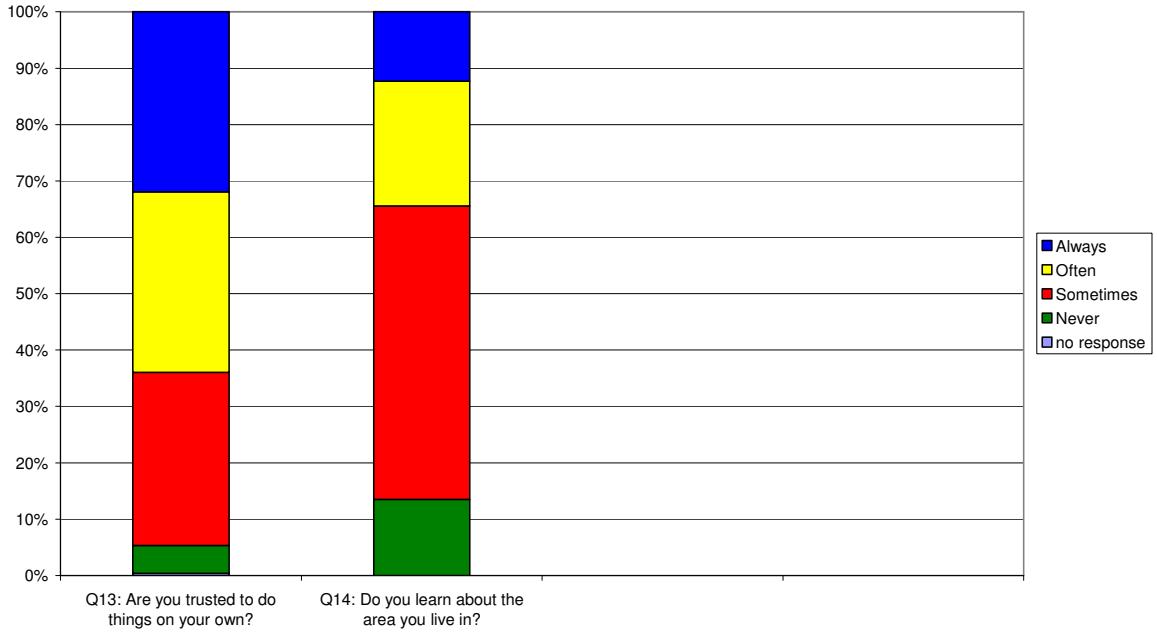


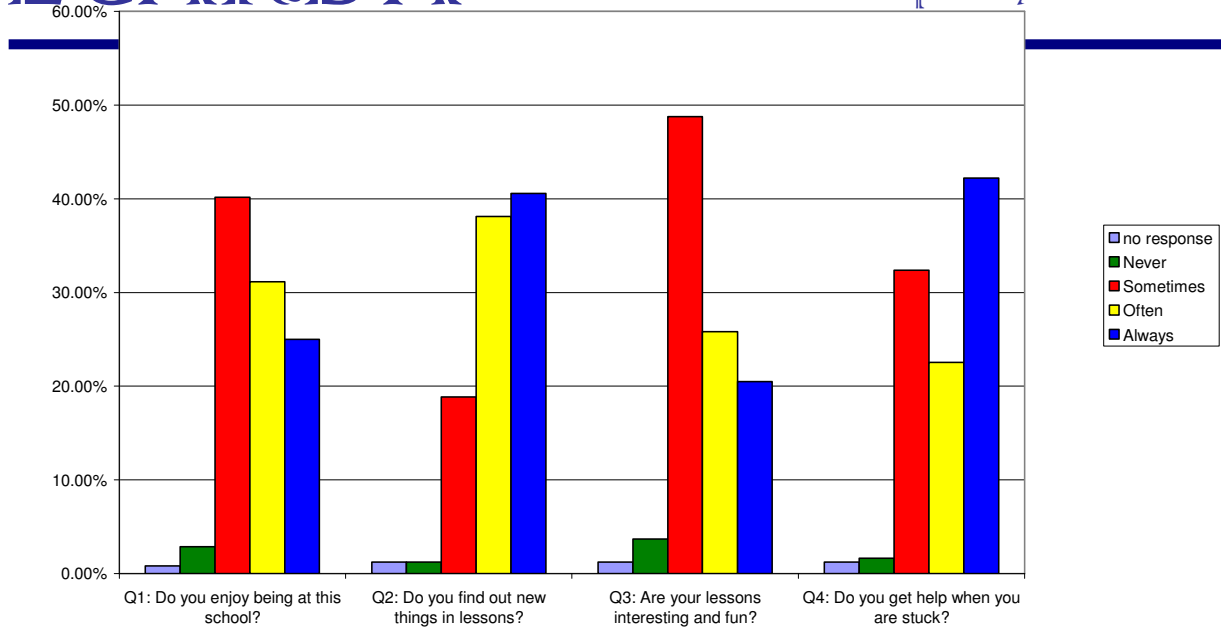
William Barcroft Junior School - Pupil Survey - Whole School - June 2008



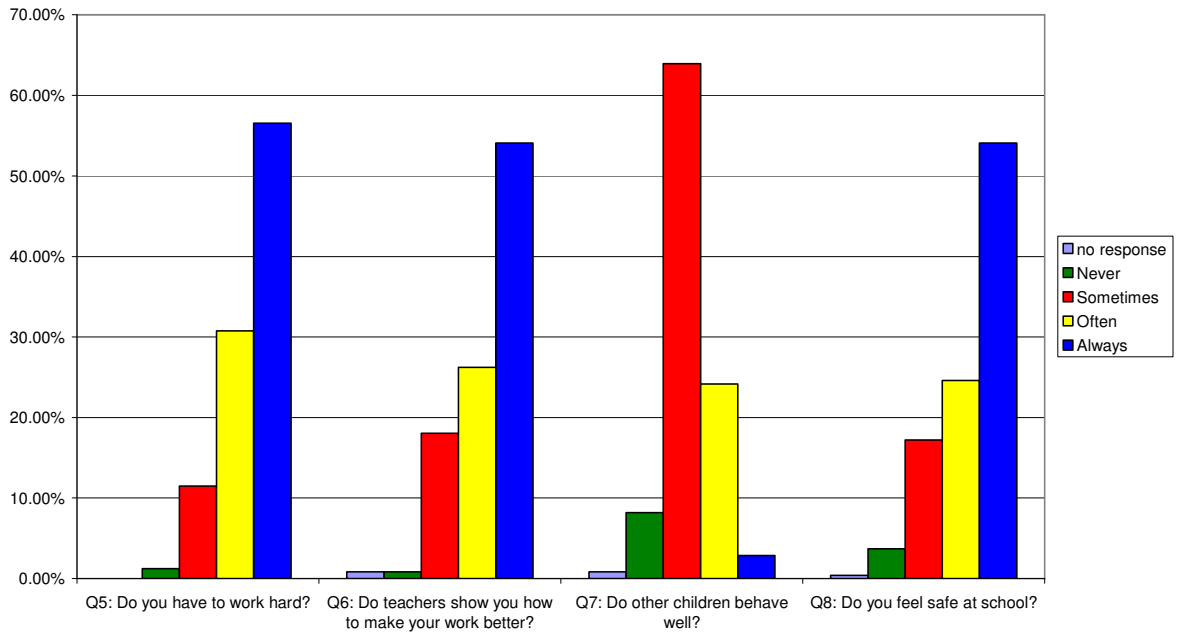


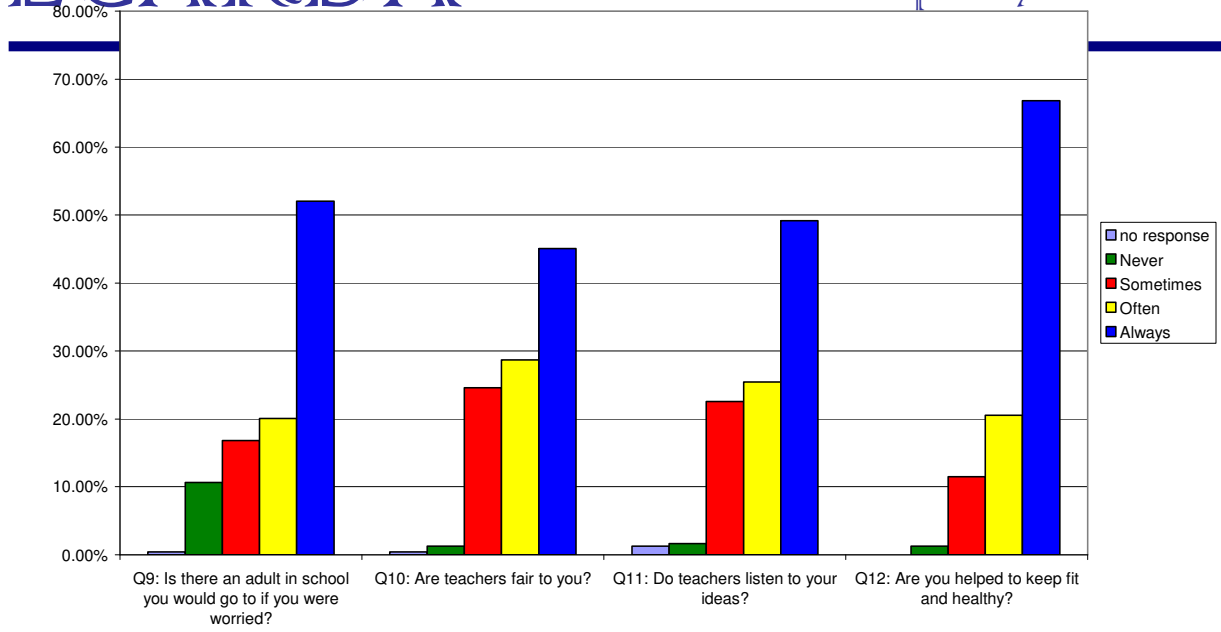
William Barcroft Junior School - Pupil Survey - Whole School - June 2008



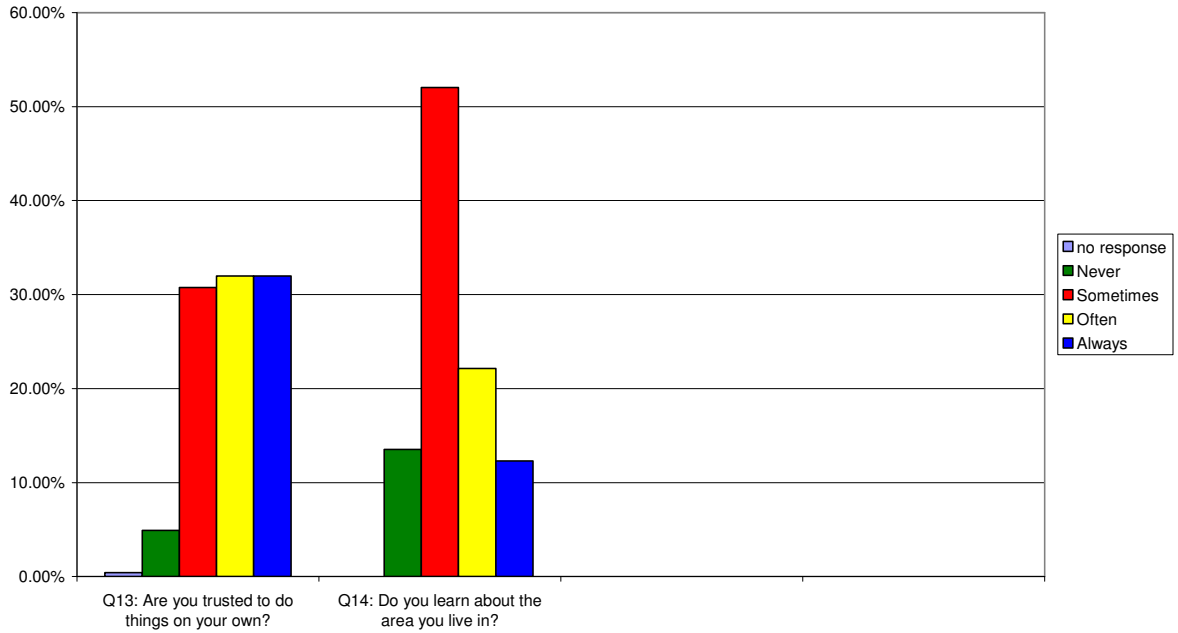


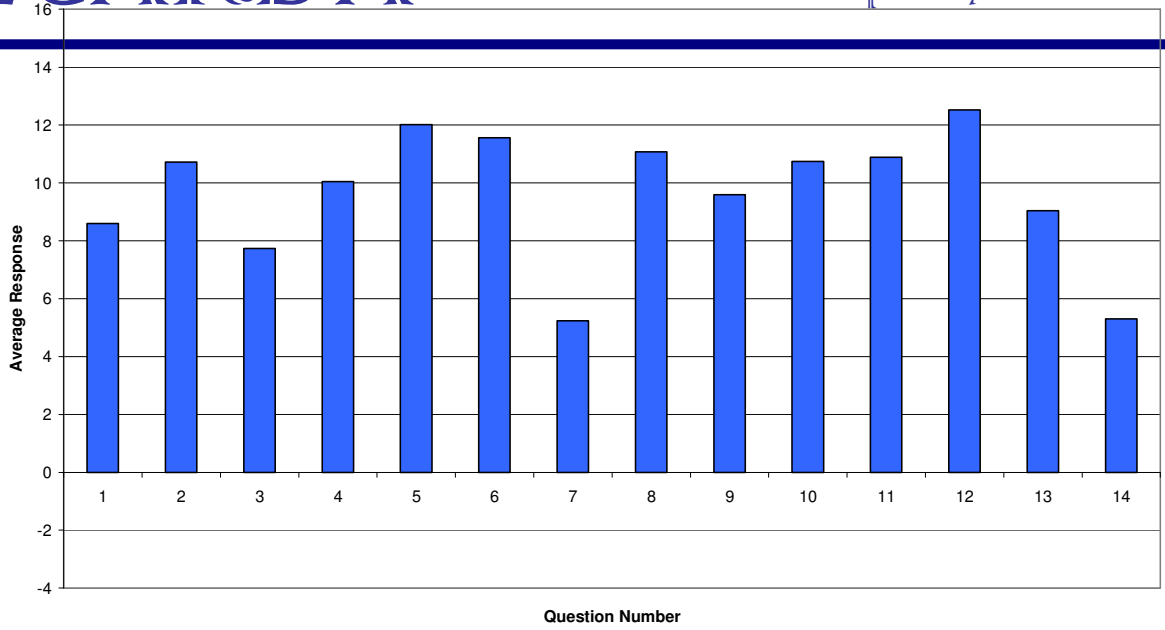
William Barcroft Junior School - Pupil Survey - Whole School - June 2008



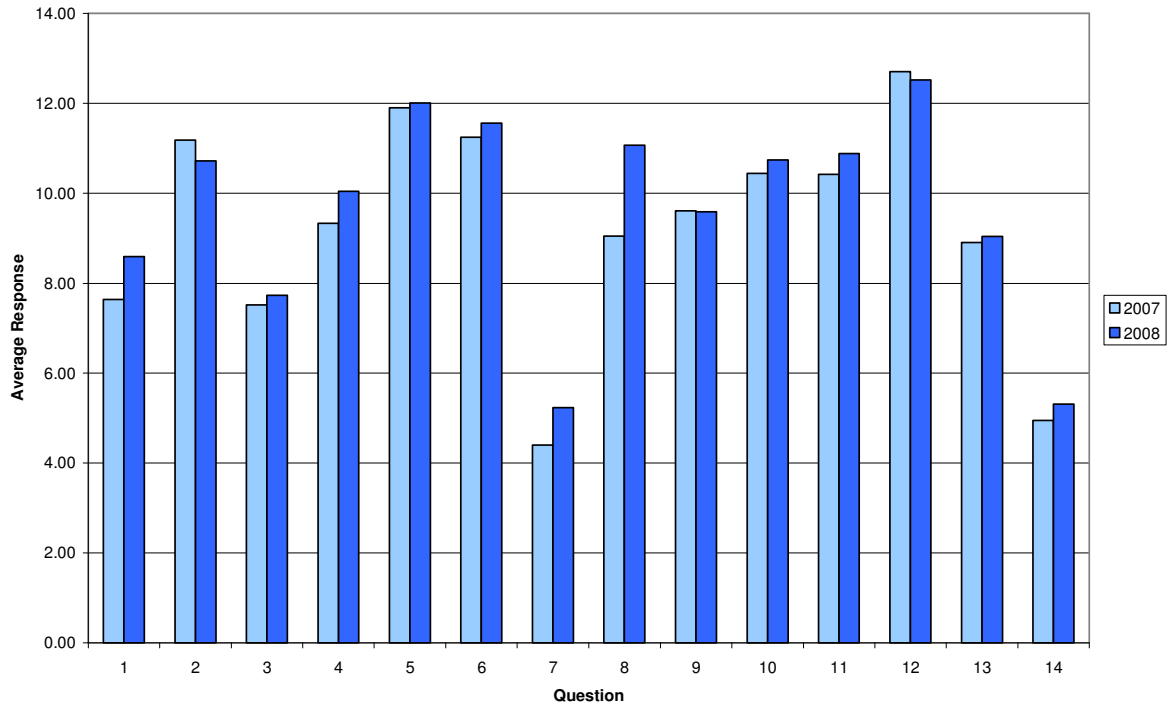


William Barcroft Junior School - Pupil Survey - Whole School - June 2008





William Barcroft Junior School - Pupil Survey - Whole School - June 2008



What I like most about my school is:

Being with my friends / making friends	46
Playing football / PE	33
My teachers / the staff are kind and helpful	28
Playtime / lunchtime	21
Art	19
ICT	16
Going outside on the field	16
The playground / the play equipment	15
Maths	13
It is fun	12
The work we do / learning new things	9
It is fair	6
School trips	5
Home time	5
Clubs after school	5
Tuck shop	3
Technology	2
Everything	2
To have Spanish / learning new languages	2
History	2
Science	1
It is like a home	1
Being able to work independently	1
Literacy	1
Skipping	1
Nothing	1
My classroom	1
Swimming	1
R.E.	1
Working in groups	1
Hot school dinners	1
It is safe	1
I don't get left out	1
It is the best ever	1
PGL	1

What I would like to change in my school is:

More playtime / dinnertime	26
Nothing	21
Some people to be nicer / the bullying / people being nasty / stop picking on me	15
A bigger / better playground	12
The classroom - have walls so you cannot hear the classroom next door	10
Play football everyday	10
The toilets / put toilet roll in the toilets	7
More playtime equipment / climbing frame / slide	7
The behaviour of some children	5
No /less work	5
Better dinners	5
To have a swimming pool	3
Yellow cards into green cards	2
Shorter day	2
People playing football too much	2
Nets to stop footballs going on the roof	2
More school trips	2
Make the football pitch bigger	2
Different /bigger drinks at dinner	2
You can do everything	1
To go on the field at lunchtime	1
To be allowed to wear shoes in the class	1
The whiteboards	1
The uniform	1
The rules	1
The rain equipment	1
Teachers should not eat in class	1
Teachers should be more fair	1
Start at 10.00 in the morning	1
Some teachers pick on you	1
Sausages once a week	1
RE	1
Put on a cooking class	1
Playground monitors	1
Playground benches	1
PE after dinner	1
PE	1
More things near the wildlife garden	1
More competitions	1

Less shouting from teachers	1
I want to have extra maths	1
I like painting more	1
Have fewer people in the dinner hall	1
Have a day of ICT	1
Getting name up	1
Football goals	1
Finish at 4.00	1
Everything	1
A play area	1
5 aside pitch with astro turf	1